

■ I N O X

| | |
|--|----|
| PUXADORES DE ROSETA LEVERS ON ROSE | 4 |
| ENTRADAS DE CHAVE/ROSETAS WC ESCUTCHEONS/WCLATCH | 8 |
| PUXADORES BICOLORS BICOLOR FINISH | 9 |
| PUXADORES PARA PORTAS METÁLICAS LEVERS FOR METAL FRAME DOORS | 10 |
| PUXADORES COM ESPELHO LEVERS WITH PLATE | 11 |
| PUXADORES COM ESPELHO/LINHA COMERCIAL COMERCIAL LINE | 12 |
| PUXADORES DE PORTA DE ENTRADA KNOBS FOR ENTRANCE DOORS | 14 |
| ACESSÓRIOS PARA EXTERIOR EXTERIOR ACCESSORIES | 15 |
| ASAS DE PORTA PULL HANDLES | 16 |
| SUPORTES DE CORRIMÃO HANDRAIL SUPPORTS | 20 |
| SINALÉTICAS SIGN PLATES | 22 |
| NÚMEROS/LETRAS NUMBERS/LETTERS | 26 |
| ASAS MOBILIÁRIO FURNITURE HANDLES | 28 |
| PUXADORES DE MOBILIÁRIO FURNITURE KNOBS | 30 |
| CONCHAS SHELLS | 31 |
| DOBRADIÇAS DE PORTA DOOR HINGES | 33 |
| BATENTES DE PAVIMENTO DOOR STOPS | 37 |
| FECHOS BOLTS | 38 |
| FERRAGENS PARA PAINEL FENÓLICO SANITARY MODULES HARDWARE PHENOLIC | 39 |
| ACESSÓRIOS DE VIDRO GLASS ACCESSORIES | 41 |

■ C L A S S I C

| | |
|---|----|
| PUXADORES DE ROSETA LEVERS ON ROSE | 46 |
| PUXADORES COM ESPELHO LEVERS WITH PLATE | 47 |
| EXTERIOR OUTDOOR | 50 |
| PUXADORES DE MOBILIÁRIO FURNITURE KNOBS | 52 |
| ASAS DE MOBILIÁRIO FURNITURE HANDLES | 53 |
| CONCHAS SHELLS | 55 |
| DOBRADIÇAS DE PORTA DOOR HINGES | 56 |
| DOBRADIÇAS DE VAI-VEM SPRING HINGES | 57 |
| DOBRADIÇAS DE MOBILIÁRIO FURNITURE HINGES | 58 |
| BATENTES PAVIMENTO DOOR STOPPERS | 59 |
| CABIDES HANGERS | 60 |
| SUPORTES DE CORRIMÃO HANDRAIL SUPPORTS | 62 |
| SUPORTES PARA VIDRO GLASS HOLDERS | 63 |
| SUPORTES PELICANO ADJUSTABLE SHELF HOLDERS | 64 |
| CREMONES WINDOW HARDWARE | 65 |
| FERRAGEM RÚSTICA RUSTIC HARDWARE | 67 |

■ T E C H N I C

| | |
|--|-----|
| FECHADURAS DE SOBREPOR RIM LOCKS | 74 |
| FECHADURAS DE EMBUTIR PARA MADEIRA WOOD MORTISE LOCKS | 76 |
| FECHADURAS TUBULARES TUBULAR LOCKS | 81 |
| FECHADURAS DE EMBUTIR PARA PORTA METÁLICA METAL MORTISE LOCKS | 82 |
| FECHADURAS ELÉTRICAS ELECTRIC LOCKS | 85 |
| CILINDROS CYLINDERS | 86 |
| MOLAS PARA PORTA DOOR CLOSERS | 89 |
| VISORES DOOR VIEWERS | 90 |
| SISTEMAS PARA PORTAS DE CORRER SLIDING DOOR SYSTEMS | 92 |
| VEDA-PORTAS E TAPA JUNTAS DRAUGHT EXCLUDER & CARPET BANDS | 94 |
| FECHOS BOLTS | 95 |
| FECHOS DE SOBREPOR BARREL BOLTS | 96 |
| FECHOS PARA MOBILIÁRIO FURNITURE BOLTS | 99 |
| FECHADURAS PARA MOBILIÁRIO FURNITURE LOCKS | 101 |
| SISTEMAS PARA ROUPEIROS CLOSET SYSTEMS | 103 |
| CANTONEIRAS BRACKETS | 111 |
| BRICOLAGE BRICOLAGE | 112 |
| ACESSÓRIOS PARA MOBILIÁRIO FURNITURE ACCESSORIES | 113 |
| SINALÉTICA DE ALUMÍNIO ALUMINUM PICTOGRAMS | 116 |
| VENTILADORES VENTS | 118 |
| CADEADOS PADLOCKS | 121 |
| MASTER ALARM MASTER ALARM | 122 |
| COFRES SAFE BOXES | 123 |
| CAIXAS DE CORREIO MAIL BOXES | 126 |
| SERRALHARIA LOCKSMITHS ACCESSORIES | 128 |
| CONDIÇÕES GERAIS DE VENDA GENERAL SALES CONDITIONS | 133 |

I N O X

PUXADORES DE ROSETA ■ LEVERS ON ROSE



REF. MA94

-AÇO INOX SATINADO
-SATIN STAINLESS STEEL

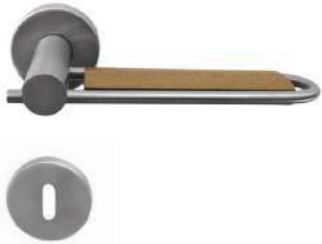
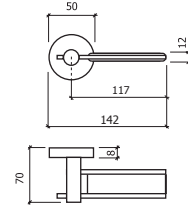
+CARVALHO/OAK
+CEREJEIRA/CHERRY
+FAIA/BEECH
+PAU SANTO/ROSEWOOD



€



1 / 10



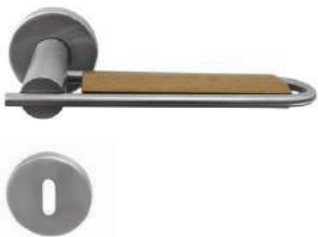
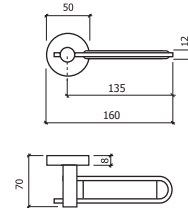
REF. MB94

-AÇO INOX SATINADO
-SATIN STAINLESS STEEL

+CARVALHO/OAK
+CEREJEIRA/CHERRY
+FAIA/BEECH
+PAU SANTO/ROSEWOOD



1 / 10



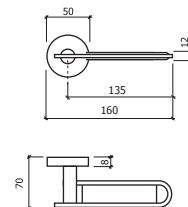
REF. MC94

-AÇO INOX SATINADO
-SATIN STAINLESS STEEL

+CARVALHO/OAK
+CEREJEIRA/CHERRY
+FAIA/BEECH
+PAU SANTO/ROSEWOOD



1 / 10



I N O X

P U X A D O R E S D E R O S E T A ■ L E V E R S O N R O S E



REF. 8001

-AÇO INOX SATINADO
-SATIN STAINLESS STEEL

Ø 16 mm
Ø 19 mm



REF. 8002

-AÇO INOX SATINADO
-SATIN STAINLESS STEEL

Ø 16 mm
Ø 19 mm



REF. 8003

-AÇO INOX SATINADO
-SATIN STAINLESS STEEL

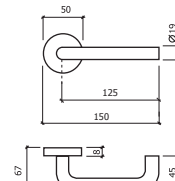
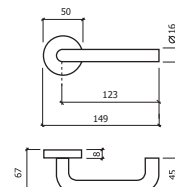
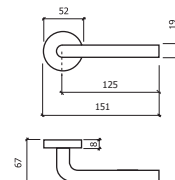
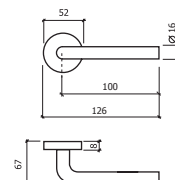
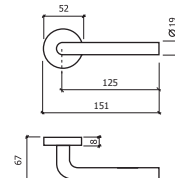
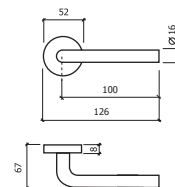
Ø 16 mm
Ø 19 mm



€



4 0



€

4 0

I N O X

PUXADORES DE ROSETA ■ LEVERS ON ROSE



REF. 8021

-AÇO INOX SATINADO
-SATIN STAINLESS STEEL



REF. 8036

-AÇO INOX SATINADO
-SATIN STAINLESS STEEL



REF. 8037

-AÇO INOX SATINADO
-SATIN STAINLESS STEEL



REF. 8039

-AÇO INOX SATINADO
-SATIN STAINLESS STEEL

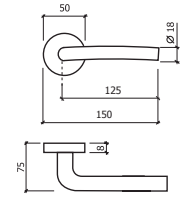


REF. 8046

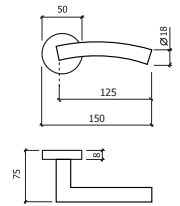
-AÇO INOX SATINADO
-SATIN STAINLESS STEEL



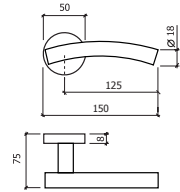
30



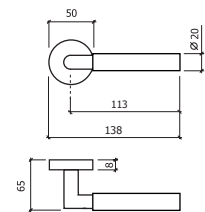
30



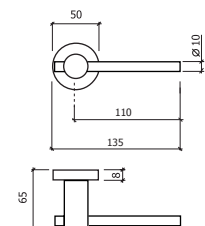
30



10



10



I N O X

P U X A D O R E S D E L E V E R S O N
R O S E T A R O S E

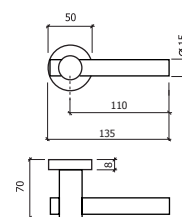


REF. 8048

-AÇO INOX SATINADO
-SATIN STAINLESS STEEL



10

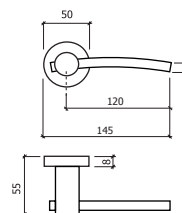


REF. 8054

-AÇO INOX SATINADO
-SATIN STAINLESS STEEL



10

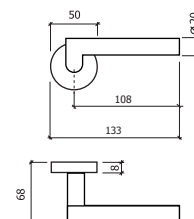


REF. 8064

-AÇO INOX SATINADO
-SATIN STAINLESS STEEL



10

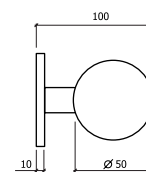


REF. 8004

-AÇO INOX SATINADO
-SATIN STAINLESS STEEL



10 PAR
10 PAIR

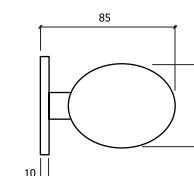


REF. 8055

-AÇO INOX SATINADO
-SATIN STAINLESS STEEL



10 PAR
10 PAIR




I N O X

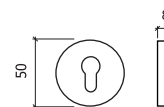
ENTRADAS DE CHAVE / ESCUTCHEONS /
ROSETAS WC W C L A T C H



REF. 270

-AÇO INOX SATINADO
-SATIN STAINLESS STEEL

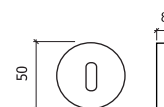
€ 
PAR 2 4



REF. 271

-AÇO INOX SATINADO
-SATIN STAINLESS STEEL

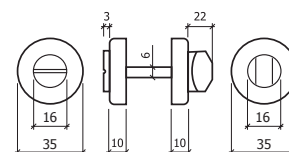
PAR 2 4



REF. 816WC

-AÇO INOX SATINADO
-SATIN STAINLESS STEEL

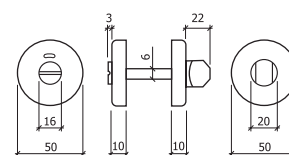
1 0



REF. 817WC

-AÇO INOX SATINADO
-SATIN STAINLESS STEEL

1 0



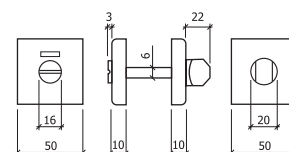
C/ INDICADOR



REF. 824WC

-AÇO INOX SATINADO
-SATIN STAINLESS STEEL

4



C/ INDICADOR

I N O X

PUXADORES
BICOLORES

BICOLOR
FINISH



REF. 8015 - DUO

- CROMADO+AÇO INOX
- CHROME+STAINLESS STEEL



REF. 8024 - DUO R

- CROMADO+AÇO INOX
- CHROME+STAINLESS STEEL



REF. 8025 - SEVILLE

- CROMADO+AÇO INOX
- CHROME+STAINLESS STEEL



REF. 8045 - SALZBURG

- CROMADO+AÇO INOX
- CHROME+STAINLESS STEEL



REF. 8032 - PRAGA

- CROMADO+NÍQUEL MATE
- CHROME+MATT NICKEL



REF. 8033 - VIENA

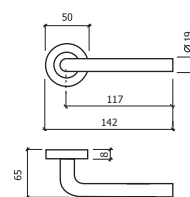
- CROMADO+NÍQUEL MATE
- CHROME+MATT NICKEL



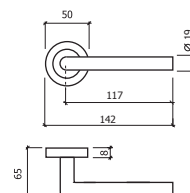
€



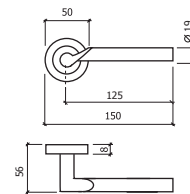
10



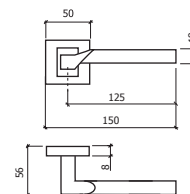
10



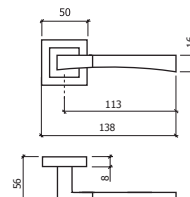
10



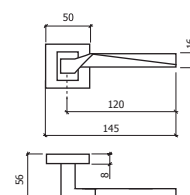
10



10



10



I N O X

PUXADORES PARA
PORTAS METÁLICAS

LEVERS FOR METAL
FRAME DOORS

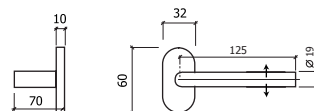
€



REF. 8501

- AÇO INOX SATINADO
- SATIN STAINLESS STEEL
- INTERIOR INOX
- STAINLESS STEEL INTERIOR

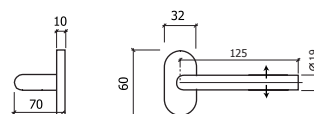
2 0



REF. 8502

- AÇO INOX SATINADO
- SATIN STAINLESS STEEL
- INTERIOR INOX
- STAINLESS STEEL INTERIOR

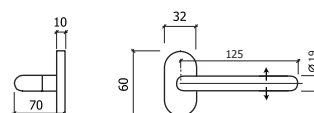
2 0



REF. 8503

- AÇO INOX SATINADO
- SATIN STAINLESS STEEL
- INTERIOR INOX
- STAINLESS STEEL INTERIOR

2 0



I N O X

PUXADORES COM LEVERS WITH
ESPELHO PLATE

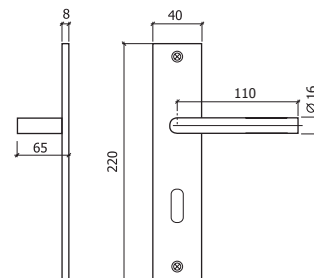


REF. 1450

-AÇO INOX SATINADO
-SATIN STAINLESS STEEL



10

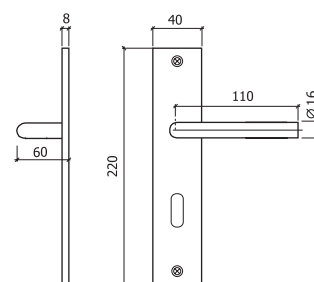


REF. 1451

-AÇO INOX SATINADO
-SATIN STAINLESS STEEL



10

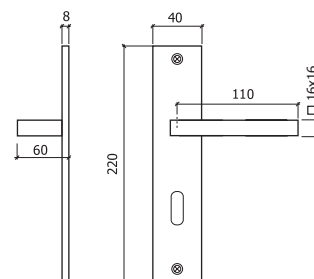


REF. 8074

-AÇO INOX SATINADO
-SATIN STAINLESS STEEL



10



I N O X

PUXADORES COM ESPELHO /
LINHA COMERCIAL

COMERCIAL
LINE

€



6

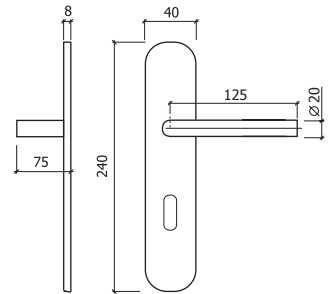
6

6



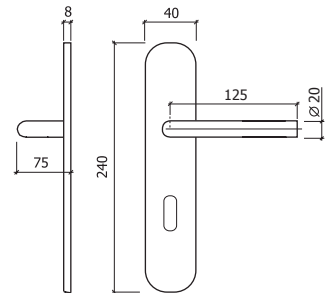
REF. 6001

-AÇO INOX SATINADO
-SATIN STAINLESS STEEL



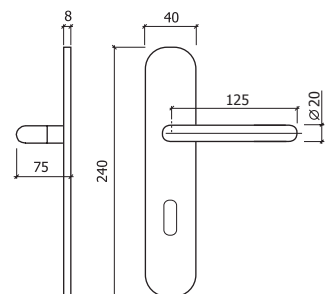
REF. 6002

-AÇO INOX SATINADO
-SATIN STAINLESS STEEL



REF. 6003

-AÇO INOX SATINADO
-SATIN STAINLESS STEEL



I N O X

PUXADORES COM ESPELHO /
LINHA COMERCIAL

COMERCIAL
LINE

€

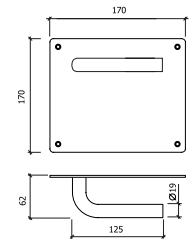


REF. 806

-AÇO INOX SATINADO
-SATIN STAINLESS STEEL



1

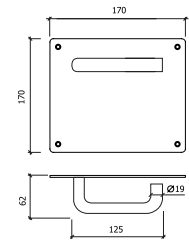


REF. 815

-AÇO INOX SATINADO
-SATIN STAINLESS STEEL



1

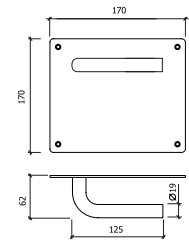


REF. 816

-AÇO INOX SATINADO
-SATIN STAINLESS STEEL



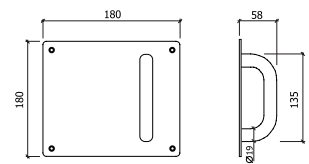
1



REF. 817

-AÇO INOX SATINADO
-SATIN STAINLESS STEEL

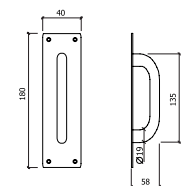
1



REF. 857

-AÇO INOX SATINADO
-SATIN STAINLESS STEEL

1



INOX

PUXADORES DE PORTA
DE ENTRADA

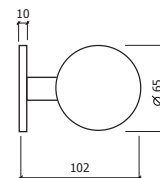
KNOBS FOR
ENTRANCE DOORS



REF. 870

-AÇO INOX SATINADO
-SATIN STAINLESS STEEL

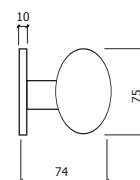
10



REF. 890

-AÇO INOX SATINADO
-SATIN STAINLESS STEEL

10



REF. 8005-50

-AÇO INOX SATINADO
-SATIN STAINLESS STEEL

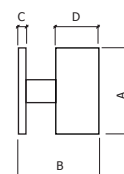
| A | B | C | D |
|---------|----|----|----|
| □ 50x50 | 58 | 10 | 25 |

REF. 8005-65

-AÇO INOX SATINADO
-SATIN STAINLESS STEEL

| A | B | C | D |
|---------|----|----|----|
| □ 65x65 | 58 | 10 | 25 |

5



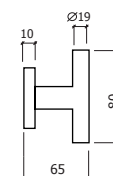
5



REF. IT20

-AÇO INOX SATINADO
-SATIN STAINLESS STEEL

10



I N O X

ACESSÓRIOS PARA ■ ACCESSORIES
EXTERIOR

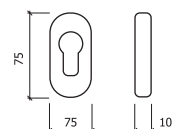
€



REF. 8121

ESCUDETE DE SEGURANÇA
SECURITY ESCUTCHEONS
-AÇO INOX SATINADO
-SATIN STAINLESS STEEL

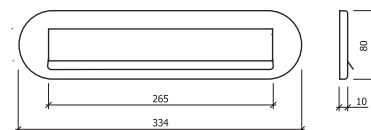
10



REF. 8141

CHAPA CARTAS
PLATE CARDS
-AÇO INOX SATINADO
-SATIN STAINLESS STEEL

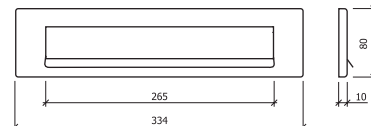
1



REF. 8142

CHAPA CARTAS
PLATE CARDS
-AÇO INOX SATINADO
-SATIN STAINLESS STEEL

1





REF. 819-U

Ø19mm
-AÇO INOX SATINADO
-SATIN STAINLESS STEEL

| A | B | |
|-----|----|-----------------------|
| 200 | 65 | SIMPLES SINGLE |
| 200 | 65 | PAR PAIR |
| 250 | 65 | SIMPLES SINGLE |
| 250 | 65 | PAR PAIR |



REF. 825-U

Ø25mm
-AÇO INOX SATINADO
-SATIN STAINLESS STEEL

| A | B | |
|-----|----|-----------------------|
| 300 | 75 | SIMPLES SINGLE |
| 300 | 75 | PAR PAIR |
| 400 | 75 | SIMPLES SINGLE |
| 400 | 75 | PAR PAIR |



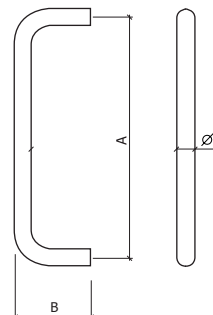
REF. 830-U

Ø30mm
-AÇO INOX SATINADO
-SATIN STAINLESS STEEL

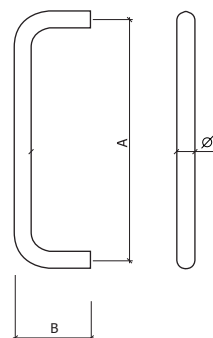
| A | B | |
|------|----|-----------------------|
| 300 | 90 | SIMPLES SINGLE |
| 300 | 90 | PAR PAIR |
| 400 | 90 | SIMPLES SINGLE |
| 400 | 90 | PAR PAIR |
| 500 | 90 | SIMPLES SINGLE |
| 500 | 90 | PAR PAIR |
| 1000 | 90 | SIMPLES SINGLE |
| 1000 | 90 | PAR PAIR |



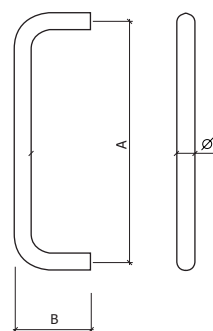
1



1



1



I N O X

ASAS
DE PORTA

PULL
HANDLES



REF. W

Ø25mm

-AÇO INOX SATINADO
-SATIN STAINLESS STEEL

| A | B | |
|-----|-----|-----------------------|
| 300 | 130 | SIMPLES SINGLE |
| 300 | 130 | PAR PAIR |
| 400 | 130 | SIMPLES SINGLE |
| 400 | 130 | PAR PAIR |
| 500 | 130 | SIMPLES SINGLE |
| 500 | 130 | PAR PAIR |



REF. W

Ø30mm

-AÇO INOX SATINADO
-SATIN STAINLESS STEEL

| A | B | |
|------|-----|-----------------------|
| 350 | 156 | SIMPLES SINGLE |
| 350 | 156 | PAR PAIR |
| 500 | 156 | SIMPLES SINGLE |
| 500 | 156 | PAR PAIR |
| 800 | 156 | SIMPLES SINGLE |
| 800 | 156 | PAR PAIR |
| 1000 | 156 | SIMPLES SINGLE |
| 1000 | 156 | PAR PAIR |



REF. 202

□25x25mm

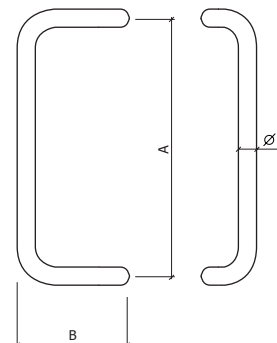
-AÇO INOX SATINADO
-SATIN STAINLESS STEEL

| A | B | C | D | |
|-----|-----|----|----|-----------------------|
| 300 | 500 | 45 | 70 | SIMPLES SINGLE |
| 300 | 500 | 45 | 70 | PAR PAIR |
| 400 | 600 | 45 | 70 | SIMPLES SINGLE |
| 400 | 600 | 45 | 70 | PAR PAIR |
| 500 | 750 | 45 | 70 | SIMPLES SINGLE |
| 500 | 750 | 45 | 70 | PAR PAIR |

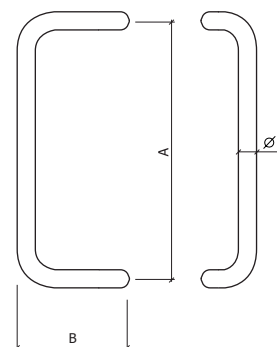
€



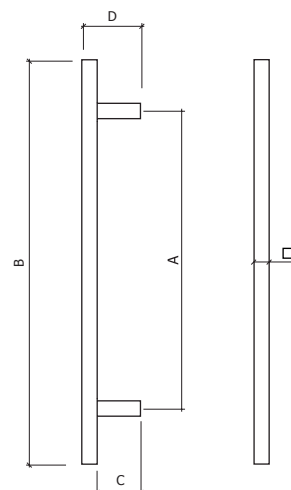
1



1



1





REF. 919

Ø19mm
-AÇO INOX SATINADO
-SATIN STAINLESS STEEL

| A | B | |
|-----|----|-----------------------|
| 200 | 60 | SIMPLES SINGLE |
| 200 | 60 | PAR PAIR |
| 300 | 60 | SIMPLES SINGLE |
| 300 | 60 | PAR PAIR |



REF. 925

Ø25mm
-AÇO INOX SATINADO
-SATIN STAINLESS STEEL

| A | B | |
|------|----|-----------------------|
| 250 | 70 | SIMPLES SINGLE |
| 250 | 70 | PAR PAIR |
| 300 | 70 | SIMPLES SINGLE |
| 300 | 70 | PAR PAIR |
| 400 | 70 | SIMPLES SINGLE |
| 400 | 70 | PAR PAIR |
| 600 | 70 | SIMPLES SINGLE |
| 600 | 70 | PAR PAIR |
| 1250 | 70 | SIMPLES SINGLE |
| 1250 | 70 | PAR PAIR |



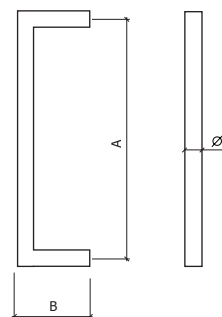
REF. 426

□20x20mm
-AÇO INOX SATINADO
-SATIN STAINLESS STEEL

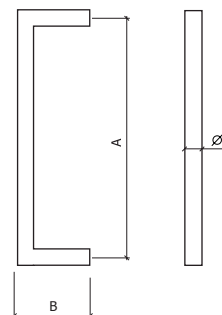
| A | B | |
|-----|----|-----------------------|
| 200 | 70 | SIMPLES SINGLE |
| 200 | 70 | PAR PAIR |
| 250 | 70 | SIMPLES SINGLE |
| 250 | 70 | PAR PAIR |
| 300 | 70 | SIMPLES SINGLE |
| 300 | 70 | PAR PAIR |



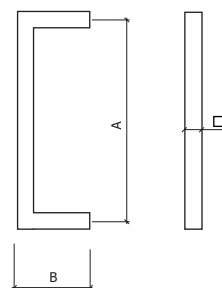
2



2



2





REF. 625

Ø25mm
-AÇO INOX SATINADO
-SATIN STAINLESS STEEL

| A | B | C | D | |
|-----|-----|----|----|-----------------------|
| 250 | 320 | 45 | 70 | SIMPLES SINGLE |
| 250 | 320 | 45 | 70 | PAR PAIR |
| 300 | 420 | 45 | 70 | SIMPLES SINGLE |
| 300 | 420 | 45 | 70 | PAR PAIR |
| 400 | 550 | 45 | 70 | SIMPLES SINGLE |
| 400 | 550 | 45 | 70 | PAR PAIR |



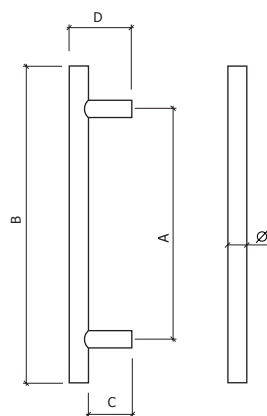
REF. 632

Ø32mm
-AÇO INOX SATINADO
-SATIN STAINLESS STEEL

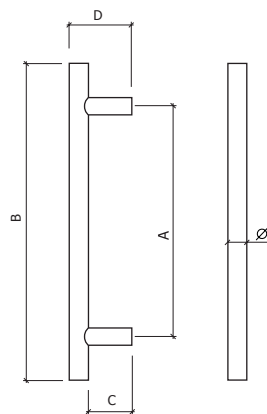
| A | B | C | D | |
|-----|-----|----|----|-----------------------|
| 300 | 420 | 45 | 78 | SIMPLES SINGLE |
| 300 | 420 | 45 | 78 | PAR PAIR |
| 450 | 600 | 45 | 78 | SIMPLES SINGLE |
| 450 | 600 | 45 | 78 | PAR PAIR |
| 500 | 650 | 45 | 78 | SIMPLES SINGLE |
| 500 | 650 | 45 | 78 | PAR PAIR |
| 800 | 960 | 45 | 78 | SIMPLES SINGLE |
| 800 | 960 | 45 | 78 | PAR PAIR |



2



2



I N O X

S U P O R T E S
C O R R I M Ã O

D E



H A N D R A I L
S U P P O R T S



REF. 325

-AÇO INOX SATINADO
-SATIN STAINLESS STEEL



REF. SC01

-AÇO INOX SATINADO
-SATIN STAINLESS STEEL



REF. SC02

-AÇO INOX SATINADO
-SATIN STAINLESS STEEL



REF. SC03

-AÇO INOX SATINADO
-SATIN STAINLESS STEEL



REF. SC04

-AÇO INOX SATINADO
-SATIN STAINLESS STEEL

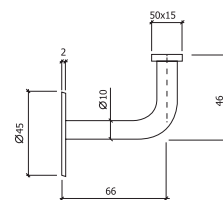


REF. SC15

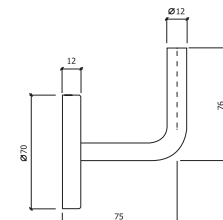
-AÇO INOX SATINADO
-SATIN STAINLESS STEEL



10

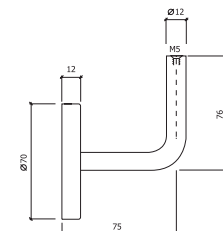


10



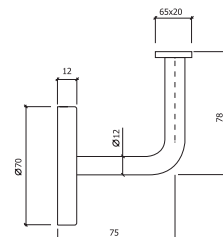
**SOLDAR
WELDING**

10

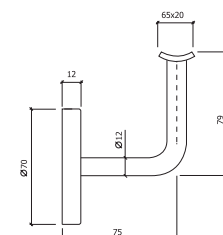


**APARAFUSAR M5
SCREW M5**

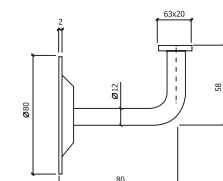
10



10



10



I N O X

S U P O R T E S
C O R R I M Ã O

D E

H A N D R A I L
S U P P O R T S



REF. SC16

-AÇO INOX SATINADO
-SATIN STAINLESS STEEL



REF. SC17

-AÇO INOX SATINADO
-SATIN STAINLESS STEEL



REF. SC18

-AÇO INOX SATINADO
-SATIN STAINLESS STEEL



REF. SC19

-AÇO INOX SATINADO
-SATIN STAINLESS STEEL



REF. SC20

-AÇO INOX SATINADO
-SATIN STAINLESS STEEL

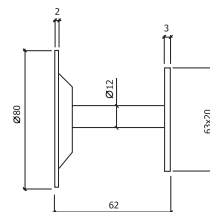


REF. SC23

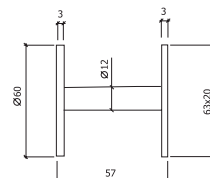
-AÇO INOX SATINADO
-SATIN STAINLESS STEEL



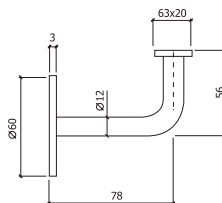
10



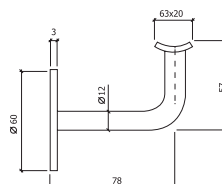
10



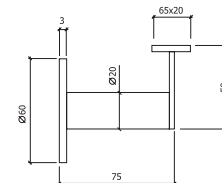
10



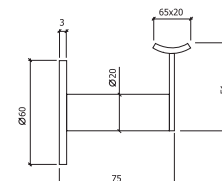
10



10



10





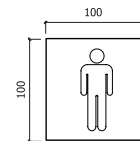
REF. 10H

C/ADESIVO W/ADHESIVE FIXING
-AÇO INOX SATINADO
-SATIN STAINLESS STEEL

€



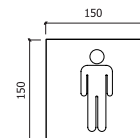
6



REF. 15H

C/ADESIVO W/ADHESIVE FIXING
-AÇO INOX SATINADO
-SATIN STAINLESS STEEL

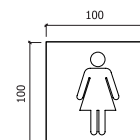
6



REF. 10M

C/ADESIVO W/ADHESIVE FIXING
-AÇO INOX SATINADO
-SATIN STAINLESS STEEL

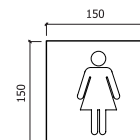
6



REF. 15M

C/ADESIVO W/ADHESIVE FIXING
-AÇO INOX SATINADO
-SATIN STAINLESS STEEL

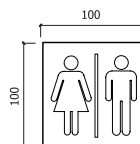
6



REF. 10HM

C/ADESIVO W/ADHESIVE FIXING
-AÇO INOX SATINADO
-SATIN STAINLESS STEEL

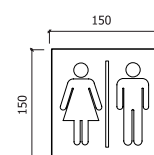
6



REF. 15HM

C/ADESIVO W/ADHESIVE FIXING
-AÇO INOX SATINADO
-SATIN STAINLESS STEEL

6



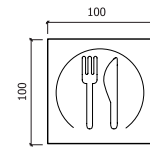


REF. 10R

C/ADESIVO W/ADHESIVE FIXING
-AÇO INOX SATINADO
-SATIN STAINLESS STEEL



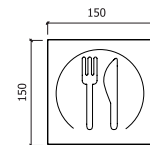
6



REF. 15R

C/ADESIVO W/ADHESIVE FIXING
-AÇO INOX SATINADO
-SATIN STAINLESS STEEL

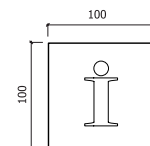
6



REF. 10I

C/ADESIVO W/ADHESIVE FIXING
-AÇO INOX SATINADO
-SATIN STAINLESS STEEL

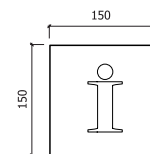
6



REF. 15I

C/ADESIVO W/ADHESIVE FIXING
-AÇO INOX SATINADO
-SATIN STAINLESS STEEL

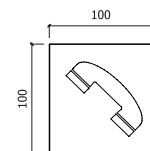
6



REF. 10T

C/ADESIVO W/ADHESIVE FIXING
-AÇO INOX SATINADO
-SATIN STAINLESS STEEL

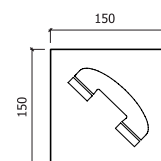
6



REF. 15T

C/ADESIVO W/ADHESIVE FIXING
-AÇO INOX SATINADO
-SATIN STAINLESS STEEL

6





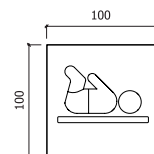
REF. 10F

C/ADESIVO W/ADHESIVE FIXING
-AÇO INOX SATINADO
-SATIN STAINLESS STEEL

€



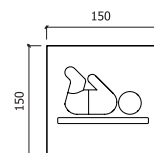
6



REF. 15F

C/ADESIVO W/ADHESIVE FIXING
-AÇO INOX SATINADO
-SATIN STAINLESS STEEL

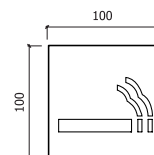
6



REF. 10FU

C/ADESIVO W/ADHESIVE FIXING
-AÇO INOX SATINADO
-SATIN STAINLESS STEEL

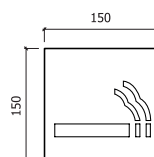
6



REF. 15FU

C/ADESIVO W/ADHESIVE FIXING
-AÇO INOX SATINADO
-SATIN STAINLESS STEEL

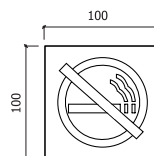
6



REF. 10PF

C/ADESIVO W/ADHESIVE FIXING
-AÇO INOX SATINADO
-SATIN STAINLESS STEEL

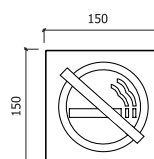
6



REF. 15PF

C/ADESIVO W/ADHESIVE FIXING
-AÇO INOX SATINADO
-SATIN STAINLESS STEEL

6

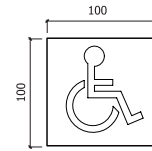




REF. 10D

C/ADESIVO W/ADHESIVE FIXING
 -AÇO INOX SATINADO
 -SATIN STAINLESS STEEL

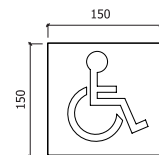
6



REF. 15D

C/ADESIVO W/ADHESIVE FIXING
 -AÇO INOX SATINADO
 -SATIN STAINLESS STEEL

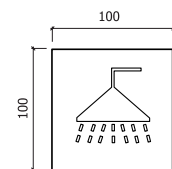
6



REF. 10CH

C/ADESIVO W/ADHESIVE FIXING
 -AÇO INOX SATINADO
 -SATIN STAINLESS STEEL

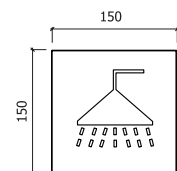
6



REF. 15CH

C/ADESIVO W/ADHESIVE FIXING
 -AÇO INOX SATINADO
 -SATIN STAINLESS STEEL

6



I N O X

N Ú M E R O S /
L E T R A S

N U M B E R S /
L E T T E R S

€



12345
67890

REF. 60

C/ADESIVO W/ADHESIVE FIXING
-AÇO INOX SATINADO
-SATIN STAINLESS STEEL

10

12345
67890

12345
67890

REF. 80

C/ADESIVO W/ADHESIVE FIXING
-AÇO INOX SATINADO
-SATIN STAINLESS STEEL

10

12345
67890

12345
67890

REF. 100

C/ADESIVO W/ADHESIVE FIXING
-AÇO INOX SATINADO
-SATIN STAINLESS STEEL

10

REF. 100P

C/PARAFUSO W/SCREW FIXING
-AÇO INOX SATINADO
-SATIN STAINLESS STEEL

10

12345
67890

12345
67890

REF. 150P

C/PARAFUSO W/SCREW FIXING
-AÇO INOX SATINADO
-SATIN STAINLESS STEEL

10

12345
67890

I N O X

N Ú M E R O S /
L E T R A S

N U M B E R S /
L E T T E R S

€



ABC

REF. ABC-60

C/ADESIVO W/ADHESIVE FIXING
-AÇO INOX SATINADO
-SATIN STAINLESS STEEL

10

ABC₆₀

ABC

REF. ABC-80

C/ADESIVO W/ADHESIVE FIXING
-AÇO INOX SATINADO
-SATIN STAINLESS STEEL

10

ABC₈₀

ABC

REF. ABC-100

C/ADESIVO W/ADHESIVE FIXING
-AÇO INOX SATINADO
-SATIN STAINLESS STEEL

10

ABC₁₀₀

REF. ABC-100P

C/PARAFUSO W/SCREW FIXING
-AÇO INOX SATINADO
-SATIN STAINLESS STEEL

10

ABC

REF. ABC-150P

C/PARAFUSO W/SCREW FIXING
-AÇO INOX SATINADO
-SATIN STAINLESS STEEL

10

ABC₁₅₀



REF. 214

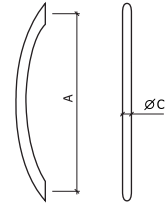
Ø10mm
-AÇO INOX SATINADO
-SATIN STAINLESS STEEL

A
96
128
160
192
224
256

€



25



REF. 215

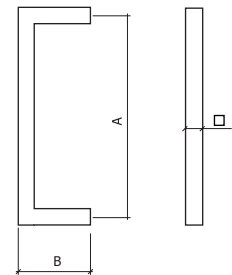
□10x10mm
-AÇO INOX SATINADO
-SATIN STAINLESS STEEL

| A | B |
|-----|----|
| 96 | 32 |
| 128 | 32 |
| 160 | 32 |
| 192 | 32 |
| 224 | 32 |

□12x12mm
-AÇO INOX SATINADO
-SATIN STAINLESS STEEL

| A | B |
|-----|----|
| 96 | 32 |
| 128 | 32 |
| 160 | 32 |
| 192 | 32 |
| 224 | 32 |

25

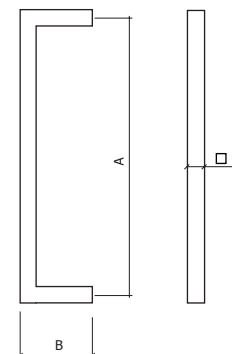


REF. 2005

□20x8mm
-AÇO INOX SATINADO
-SATIN STAINLESS STEEL

| A | B |
|-----|----|
| 160 | 35 |
| 192 | 35 |
| 320 | 35 |

25





REF. 216

Ø10mm
-AÇO INOX SATINADO
-SATIN STAINLESS STEEL

| A | B |
|-----|----|
| 96 | 32 |
| 128 | 32 |
| 160 | 32 |
| 192 | 32 |
| 224 | 32 |
| 288 | 32 |

REF. 217

Ø10mm
-AÇO INOX SATINADO
-SATIN STAINLESS STEEL

| A | B | C |
|-----|-----|----|
| 96 | 160 | 35 |
| 128 | 192 | 35 |
| 160 | 220 | 35 |
| 192 | 256 | 35 |
| 224 | 290 | 35 |
| 256 | 320 | 35 |
| 320 | 385 | 35 |
| 352 | 415 | 35 |
| 384 | 448 | 35 |
| 416 | 480 | 35 |
| 480 | 545 | 35 |
| 512 | 575 | 35 |
| 544 | 605 | 35 |
| 576 | 640 | 35 |

Ø12mm
-AÇO INOX SATINADO
-SATIN STAINLESS STEEL

| A | B | C |
|-----|-----|----|
| 96 | 160 | 37 |
| 128 | 192 | 37 |
| 160 | 220 | 37 |
| 192 | 256 | 37 |
| 224 | 290 | 37 |
| 256 | 320 | 37 |
| 320 | 385 | 37 |



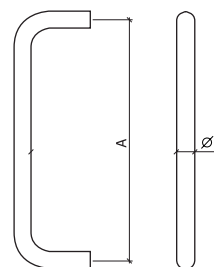
REF. 229

Ø20
-AÇO INOX SATINADO
-SATIN STAINLESS STEEL

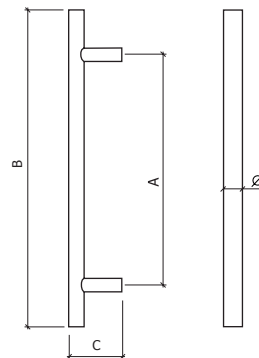
| A | B | C |
|-----|----|---|
| 160 | 30 | 8 |
| 192 | 30 | 8 |
| 224 | 30 | 8 |



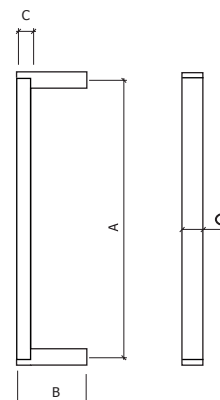
25



25



25



I N O X

PUXADORES DE MOBILIÁRIO ■ FURNITURE KNOBS



REF. 114

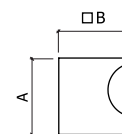
-AÇO INOX SATINADO
-SATIN STAINLESS STEEL

| A | B |
|----|----|
| 23 | 12 |
| 26 | 15 |
| 26 | 18 |

€



5 0

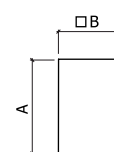


REF. 115

-AÇO INOX SATINADO
-SATIN STAINLESS STEEL

| A | B |
|----|----|
| 26 | 15 |
| 26 | 18 |

5 0

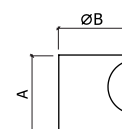


REF. 117

-AÇO INOX SATINADO
-SATIN STAINLESS STEEL

| A | B |
|----|----|
| 23 | 12 |
| 23 | 15 |
| 25 | 18 |
| 26 | 20 |
| 30 | 25 |

5 0

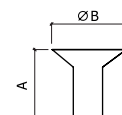


REF. 513

-AÇO INOX SATINADO
-SATIN STAINLESS STEEL

| A | B |
|----|----|
| 18 | 15 |
| 18 | 20 |
| 22 | 25 |

5 0

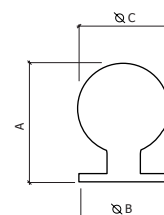


REF. 1625

-AÇO INOX SATINADO
-SATIN STAINLESS STEEL

| A | B | C |
|----|----|----|
| 25 | 20 | 20 |
| 32 | 25 | 25 |

5 0



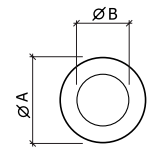


REF. 11125

-AÇO INOX SATINADO
-SATIN STAINLESS STEEL

| A | B |
|----|----|
| 30 | 25 |

25



REF. 11140

-AÇO INOX SATINADO
-SATIN STAINLESS STEEL

| A | B |
|----|----|
| 40 | 35 |

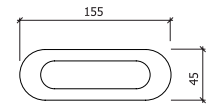
25



REF. 2240

-AÇO INOX SATINADO
-SATIN STAINLESS STEEL

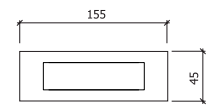
6



REF. 2250

-AÇO INOX SATINADO
-SATIN STAINLESS STEEL

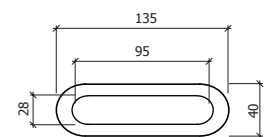
6



REF. 1351

-AÇO INOX SATINADO
-SATIN STAINLESS STEEL

25

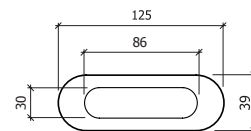




REF. 3301

-AÇO INOX SATINADO
-SATIN STAINLESS STEEL

2 5

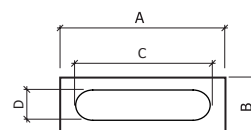


REF. 120

-AÇO INOX SATINADO
-SATIN STAINLESS STEEL

| | A | B | C | D |
|----|-----|----|----|-----|
| S | 100 | 50 | 27 | 92 |
| M | 120 | 40 | 27 | 92 |
| XL | 180 | 60 | 38 | 150 |

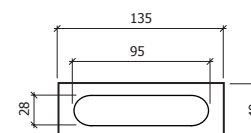
2 5



REF. 1451

-AÇO INOX SATINADO
-SATIN STAINLESS STEEL

2 5

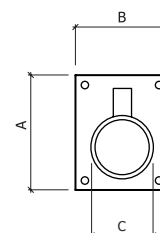


REF. 122

-AÇO INOX SATINADO
-SATIN STAINLESS STEEL

| | A | B | C |
|---|----|----|----|
| S | 38 | 48 | 28 |
| L | 50 | 50 | 38 |

2 5





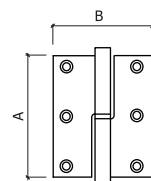
REF. 479

LEME
-AÇO INOX SATINADO
-SATIN STAINLESS STEEL

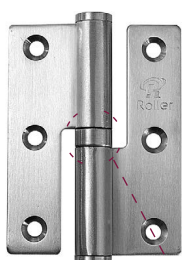
| | A | B | ESPESSURA |
|-------------|----|----|-----------|
| 3,5" | 90 | 65 | 2,5 |

*DISPONÍVEL EM CANTOS REDONDOS
 *AVAILABLE WITH ROUND CORNERS

€



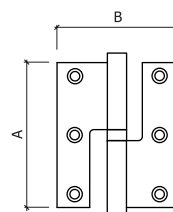
12



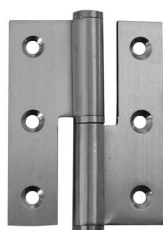
REF. 474

MEIO BALANÇO
-AÇO INOX SATINADO
-SATIN STAINLESS STEEL

| | A | B | ESPESSURA |
|-------------|-----|----|-----------|
| 3" | 75 | 60 | 2,5 |
| 3,5" | 90 | 65 | 2,5 |
| 4" | 102 | 86 | 2,5 |



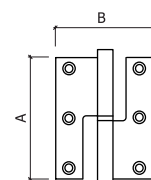
12



REF. 476

MEIO BALANÇO
-AÇO INOX SATINADO
-SATIN STAINLESS STEEL

| | A | B | ESPESSURA |
|-----------|----|----|-----------|
| 3" | 75 | 60 | 2 |



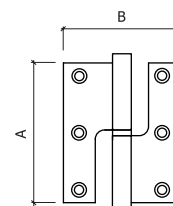
12



REF. 163

MEIO BALANÇO
-AÇO INOX SATINADO
-SATIN STAINLESS STEEL

| | A | B | ESPESSURA |
|-------------|----|----|-----------|
| 2,5" | 64 | 51 | 2 |

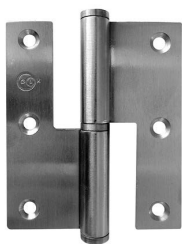


12

I N O X

DOBRADIÇAS
DE PORTA

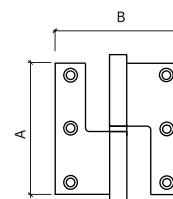
DOOR
HINGES



REF. 475

BALANÇO
-AÇO INOX SATINADO
-SATIN STAINLESS STEEL

| | A | B | ESPESSURA |
|------|----|----|-----------|
| 3,5" | 90 | 75 | 2,5 |



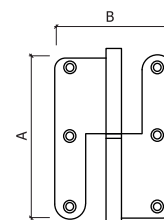
12



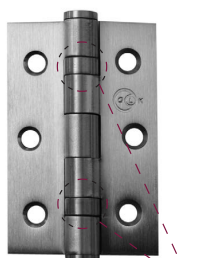
REF. 475R

BALANÇO
-AÇO INOX SATINADO
-SATIN STAINLESS STEEL

| | A | B | ESPESSURA |
|------|----|----|-----------|
| 3,5" | 90 | 75 | 2,5 |



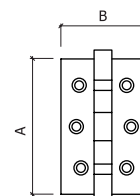
12



REF. 480

FIEL
-AÇO INOX SATINADO
-SATIN STAINLESS STEEL

| | A | B | ESPESSURA |
|----|----|----|-----------|
| 3" | 75 | 50 | 2 |



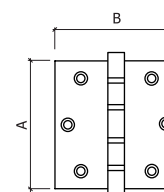
12



REF. 278

FIEL
-AÇO INOX SATINADO
-SATIN STAINLESS STEEL

| | A | B | ESPESSURA |
|------|----|----|-----------|
| 70mm | 70 | 70 | 2,5 |
| 80mm | 80 | 80 | 2,5 |

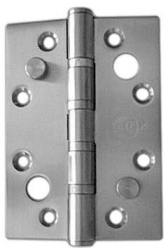


10

I N O X

DOBRADIÇAS
DE PORTA

■ DOOR
HINGES



REF. 564 SRI

-AÇO INOX SATINADO
-SATIN STAINLESS STEEL

| A | B | ESPESSURA |
|-----|----|-----------|
| 102 | 76 | 3 |

REF. 566 SRI

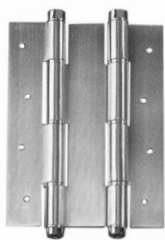
-AÇO INOX SATINADO
-SATIN STAINLESS STEEL

| A | B | ESPESSURA |
|-----|----|-----------|
| 123 | 76 | 3 |



REF. 1330

-AÇO INOX SATINADO
-SATIN STAINLESS STEEL



REF. 2330

-AÇO INOX SATINADO
-SATIN STAINLESS STEEL



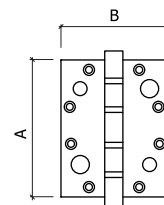
REF. 488

-AÇO INOX SATINADO
-SATIN STAINLESS STEEL

| | A | B | ESPESSURA |
|----|-----|----|-----------|
| 3" | 75 | 70 | 2 |
| 4" | 102 | 80 | 2 |

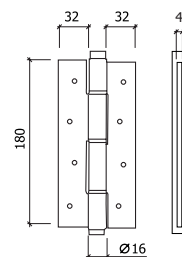


10



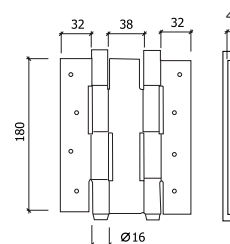
10

6



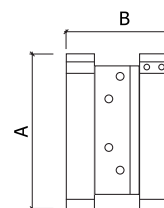
C/MOLA

6



VAI- VEM 2 ABAS

10 PAR
10 PAIR



I N O X

DOBRADIÇAS
DE PORTA

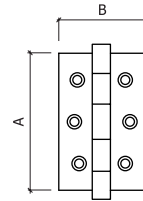
DOOR
HINGES



REF. 460

-AÇO INOX SATINADO
-SATIN STAINLESS STEEL

| A | B | ESPESSURA |
|----|----|-----------|
| 60 | 40 | 1,5 |
| 70 | 50 | 1,5 |

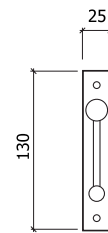


2 0



REF. 225

-AÇO INOX SATINADO
-SATIN STAINLESS STEEL



1/20

REF. DOBRADIÇA PIANO

-AÇO INOX SATINADO
-SATIN STAINLESS STEEL

| A | B |
|----|------|
| 32 | 2000 |
| 40 | 2000 |

-FERRO LATONADO
-STEEL BRASS PLATED

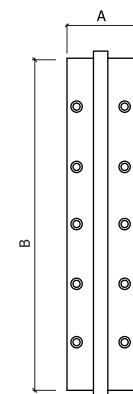
| A | B |
|----|------|
| 32 | 2000 |
| 40 | 2000 |

-FERRO NIQUELADO
-STEEL NICKEL PLATED

| A | B |
|----|------|
| 32 | 2000 |

-LATÃO POLIDO
-POLISHED BRASS

| A | B |
|----|------|
| 32 | 2000 |
| 40 | 2000 |



2 0 0 m

I N O X

B A T E N T E S D E
P A V I M E N T O

D O O R
S T O P S

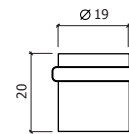


REF. 820

-AÇO INOX SATINADO
-SATIN STAINLESS STEEL



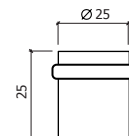
5 0



REF. 826-25

-AÇO INOX SATINADO
-SATIN STAINLESS STEEL

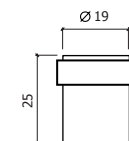
2 5



REF. 828

-AÇO INOX SATINADO
-SATIN STAINLESS STEEL

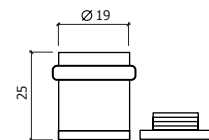
4 0



REF. 840

-AÇO INOX SATINADO
-SATIN STAINLESS STEEL

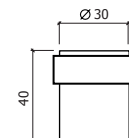
2 5



REF. 1041

-AÇO INOX SATINADO
-SATIN STAINLESS STEEL

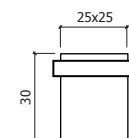
1 0



REF. 1044

-AÇO INOX SATINADO
-SATIN STAINLESS STEEL

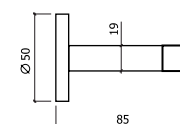
2 0



REF. 1080

-AÇO INOX SATINADO
-SATIN STAINLESS STEEL

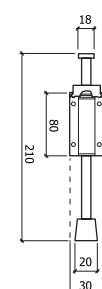
1 0



REF. 12-1

-AÇO INOX SATINADO
-SATIN STAINLESS STEEL

6

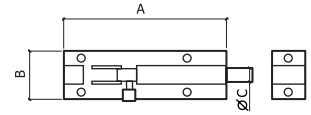




REF. 105

-AÇO INOX SATINADO
-SATIN STAINLESS STEEL

| A | B | C |
|-----|----|---|
| 100 | 35 | 8 |
| 150 | 35 | 8 |
| 200 | 35 | 8 |
| 250 | 35 | 8 |
| 250 | 35 | 8 |



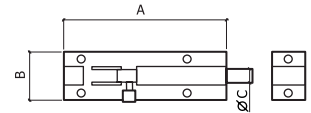
2 0



REF. 107

-AÇO INOX SATINADO
-SATIN STAINLESS STEEL

| A | B | C |
|-----|----|-----|
| 50 | 27 | 6,5 |
| 75 | 27 | 6,5 |
| 100 | 27 | 6,5 |
| 125 | 27 | 6,5 |



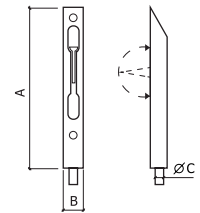
2 0



REF. 401

-AÇO INOX SATINADO
-SATIN STAINLESS STEEL

| A | B | C |
|-----|----|---|
| 150 | 16 | 8 |
| 160 | 16 | 8 |
| 200 | 16 | 8 |
| 250 | 16 | 8 |
| 250 | 16 | 8 |



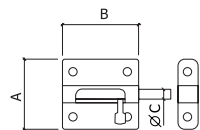
2 0



REF. 616

-AÇO INOX SATINADO
-SATIN STAINLESS STEEL

| A | B | C |
|----|----|---|
| 40 | 40 | 9 |
| 50 | 40 | 9 |
| 80 | 40 | 9 |



2 0

I N O X

FERRAGENS PARA
PAINEL FENÓLICO

SANITARY MODULES
HARDWARE PHENOLIC

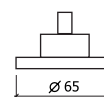
€



REF. K1

-AÇO INOX SATINADO
-SATIN STAINLESS STEEL

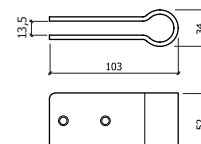
1/10



REF. K2

-AÇO INOX SATINADO
-SATIN STAINLESS STEEL

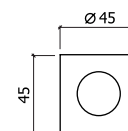
1/10



REF. K3A

2 FUROS 2 HOLES
-AÇO INOX SATINADO
-SATIN STAINLESS STEEL

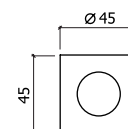
1/10



REF. K3B

3 FUROS 3 HOLES
-AÇO INOX SATINADO
-SATIN STAINLESS STEEL

1/10

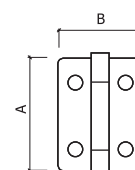


REF. K5B

-S/MOLA
-W/O SPRING
-AÇO INOX SATINADO
-SATIN STAINLESS STEEL

A B
90 52

1/10



REF. K5C

-C/MOLA
-W/ SPRING
-AÇO INOX SATINADO
-SATIN STAINLESS STEEL

A B
80 65

1/10

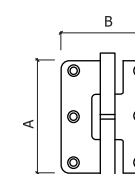


REF. K5D

-AÇO INOX SATINADO
-SATIN STAINLESS STEEL

A B
80 65

2 0



I N O X

FERRAGENS PARA
PAINEL FENÓLICO

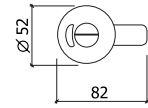
SANITARY MODULES
HARDWARE PHENOLIC



REF. K6A

-AÇO INOX SATINADO
-SATIN STAINLESS STEEL

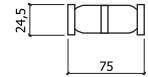
1/10



REF. 300

PUXADOR KNOB
-AÇO INOX SATINADO
-SATIN STAINLESS STEEL

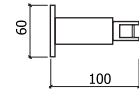
2 0



REF. K7

-AÇO INOX SATINADO
-SATIN STAINLESS STEEL

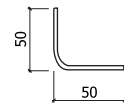
1/10



REF. K8

-AÇO INOX SATINADO
-SATIN STAINLESS STEEL

1/10



REF. K25

TUBO TUBE
-AÇO INOX SATINADO
-SATIN STAINLESS STEEL

5m/30m

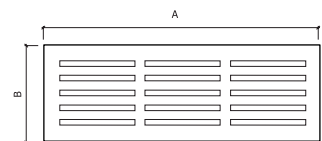


REF. 275

FIXAÇÃO C/ ADESIVO
ADHESIVE FIXING
-AÇO INOX SATINADO
-SATIN STAINLESS STEEL

| A | B |
|-----|-----|
| 60 | 60 |
| 150 | 150 |
| 200 | 60 |
| 200 | 80 |
| 200 | 95 |
| 200 | 150 |
| 330 | 165 |

1 0



I N O X

ACESSÓRIOS
DE VIDRO

GLASS
ACCESSORIES



REF. 1402

-AÇO INOX SATINADO
-SATIN STAINLESS STEEL



REF. 244

-AÇO INOX SATINADO
-SATIN STAINLESS STEEL



REF. 8343

VIDRO DE 8 & 10mm EXPESSURA
GLASS THICKNESS 8&10mm

-AÇO INOX SATINADO
-SATIN STAINLESS STEEL

-AÇO INOX SATINADO 316
-SATIN STAINLESS STEEL 316

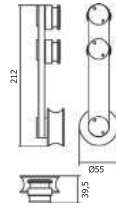


REF. 8343R/24

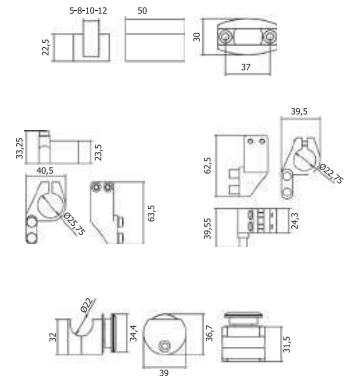
VIDRO DE 8 & 10mm EXPESSURA
GLASS THICKNESS 8&10mm

-AÇO INOX SATINADO
-SATIN STAINLESS STEEL

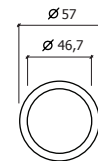
-AÇO INOX SATINADO 316
-SATIN STAINLESS STEEL 316



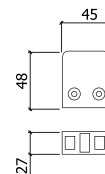
1 JOGO
1 KIT



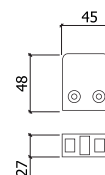
1 JOGO
1 KIT



12



12



CLASSIC

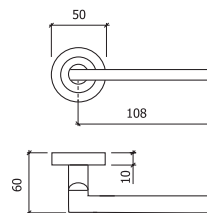
PUXADORES DE ROSETA ■ LEVERS ON ROSE

€



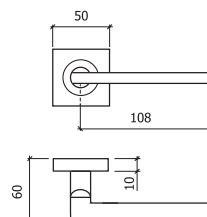
REF. 8062CN
 -CROMADO + NÍQUEL
 -CHROME+ NICKEL
 PAR PAIR

12



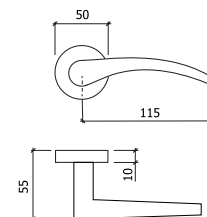
REF. 8066
 -NÍQUEL NICKEL
 PAR PAIR

12



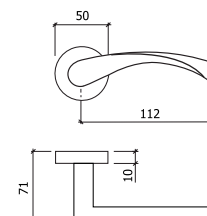
REF. 8068
 -NÍQUEL NICKEL
 PAR PAIR

12



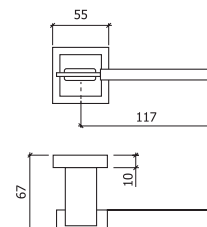
REF. 8057
 -NÍQUEL NICKEL
 PAR PAIR

12



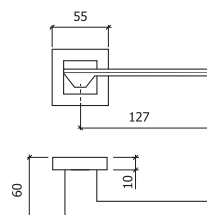
REF. 8067
 -CROMADO + NÍQUEL
 -CHROME+ NICKEL
 PAR PAIR

12



REF. 8077
 -NÍQUEL NICKEL
 PAR PAIR

12



*PREÇOS S/ ENTRADA DE CHAVE
 *PRICES W/O ESCUTCHEONS

CLASSIC

PUXADORES COM
ESPELHO

LEVERS WITH
PLATE



REF. 634

- BRONZE
- BRONZE
- NÍQUEL MATE
- MATT NICKEL

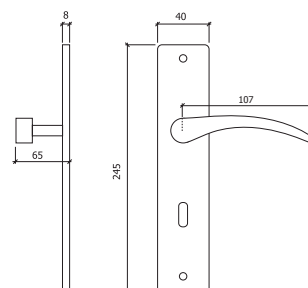
PAR PAIR



€



2 0



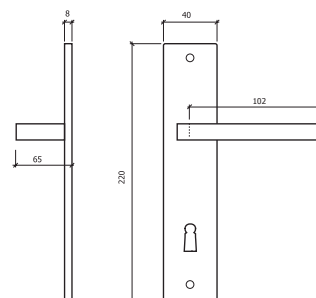
REF. 2033

- NÍQUEL MATE
- MATT NICKEL

PAR PAIR



1 0



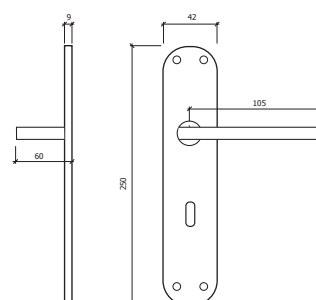
REF. 3306

- NÍQUEL MATE
- MATT NICKEL

PAR PAIR



1 0



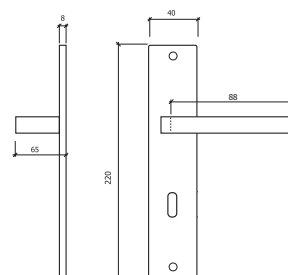
REF. 2005

- BRONZE
- BRONZE
- NÍQUEL MATE
- MATT NICKEL

PAR PAIR



2 0



CLASSIC

PUXADORES COM
ESPELHO

LEVERS WITH
PLATE

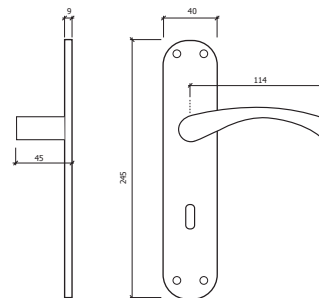
€



REF. 3308

- BRONZE
- BRONZE
- NÍQUEL MATE
- MATT NICKEL

PAR PAIR



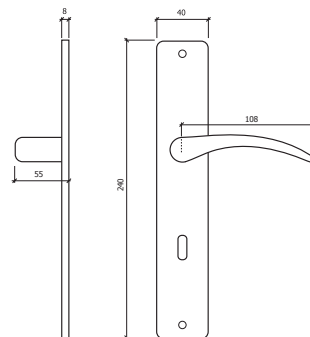
10



REF. 2040

- NÍQUEL MATE
- MATT NICKEL

PAR PAIR



10



REF. 2800

- BRONZE
- BRONZE

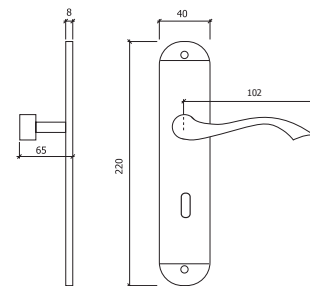
PAR PAIR

C/FECHADURA 716 W/716 LOCK

- NÍQUEL MATE
- MATT NICKEL

PAR PAIR

C/FECHADURA 716 W/716 LOCK



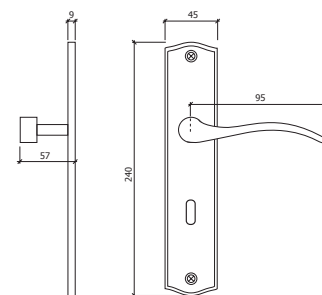
20



REF. 306

- BRONZE
- BRONZE
- NÍQUEL MATE
- MATT NICKEL

PAR PAIR



20

CLASSIC

PUXADORES COM
ESPELHO

LEVERS WITH
PLATE

€



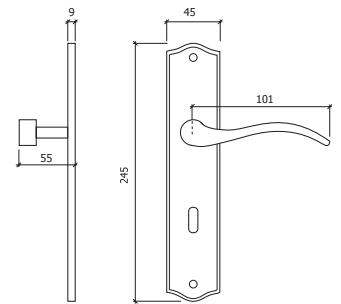
REF. 633

- BRONZE
- BRONZE
- NÍQUEL MATE
- MATT NICKEL

PAR PAIR



2 0



REF. 302

- BRONZE
- BRONZE

PAR PAIR

C/FECHADURA 716 W/716 LOCK

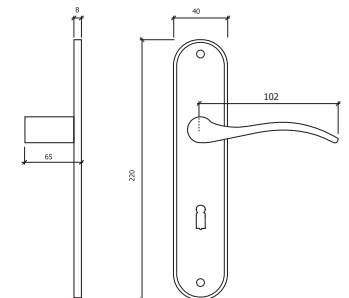
- NÍQUEL MATE
- MATT NICKEL

PAR PAIR

C/FECHADURA 716 W/716 LOCK



1 0



REF. 4000

- BRONZE
- BRONZE

PAR PAIR

C/FECHADURA 716 W/716 LOCK

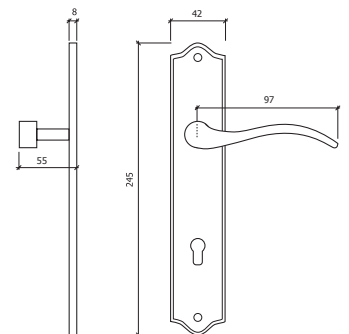
- NÍQUEL MATE
- MATT NICKEL

PAR PAIR

C/FECHADURA 716 W/716 LOCK



1 0



REF. 635

- BRONZE
- BRONZE

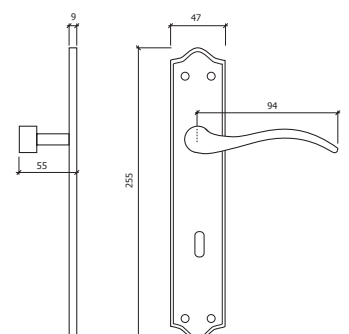
- LAT.
- LAT.

- LAT. MATE
- LAT. NICKEL

- NÍQUEL MATE
- MATT NICKEL



2 0



CLASSIC

PUXADORES COM ESPELHO ■ LEVERS WITH PLATE



REF. 2533

-LATÃO POLIDO
-POLISHED BRASS

PAR PAIR



REF. 307

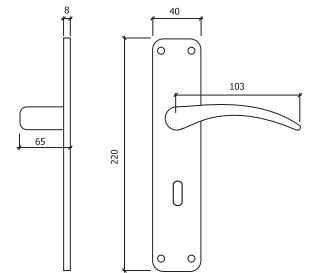
-LATONADO
-BRASS PLATED

PAR PAIR



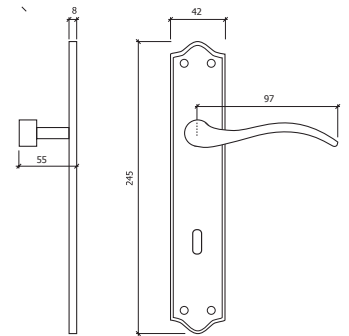
€ 

2 0



€ 

2 0



CLASSIC

EXTERIOR ■ OUTDOOR



GlobalLock



REF. 581/60

-LATÃO POLIDO
-POLISHED BRASS

PAR PAIR

-LATÃO BRONZE
-BRONZE BRASS

PAR PAIR

-NÍQUEL MATE
-MATT NICKEL

PAR PAIR



REF. EC581

-LATÃO POLIDO
-POLISHED BRASS

PAR PAIR

-LATÃO BRONZE
-BRONZE BRASS

PAR PAIR

-NÍQUEL MATE
-MATT NICKEL

PAR PAIR

€

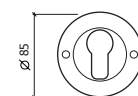
€

€

1 / 6



1



CLASSIC

EXTERIOR ■ OUTDOOR



REF. 580/70

-LATÃO POLIDO
-POLISHED BRASS

-LATÃO BRONZE
-BRONZE BRASS

-NÍQUEL MATE
-MATT NICKEL



REF. 581/75

-LATÃO POLIDO
-POLISHED BRASS

-LATÃO BRONZE
-BRONZE BRASS

-NÍQUEL MATE
-MATT NICKEL



REF. 636/70

-LATÃO POLIDO
-POLISHED BRASS

-LATÃO BRONZE
-BRONZE BRASS

-NÍQUEL MATE
-MATT NICKEL



REF. 727

-BRONZE
-BRONZE

-NÍQUEL MATE
-MATT NICKEL



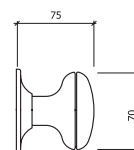
REF. 747

-BRONZE
-BRONZE

-NÍQUEL MATE
-MATT NICKEL

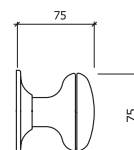


1 / 6



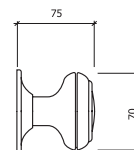
FIXO
FIXED

1 / 6



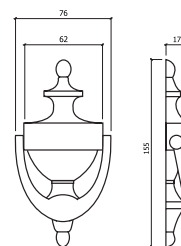
FIXO
FIXED

1 / 6

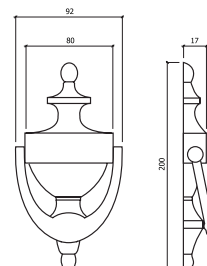


FIXO
FIXED

1 / 6



1 / 6



CLASSIC

PUXADORES DE
MOBILIÁRIO

FURNITURE
KNOBS



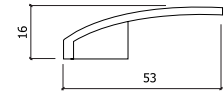
REF. 1063

- NÍQUEL MATE
- MATT NICKEL

€



50



REF. 1117

- BRONZE
- BRONZE
- NÍQUEL MATE
- MATT NICKEL

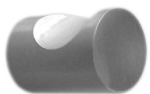
50



REF. 1122

- NÍQUEL MATE
- MATT NICKEL

50

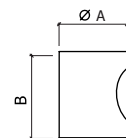


REF. 1158

- NÍQUEL MATE
- MATT NICKEL

| A | B |
|----|----|
| 15 | 22 |

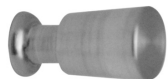
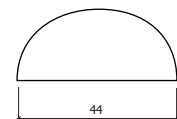
50



REF. 1173

- NÍQUEL MATE
- MATT NICKEL

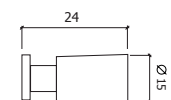
50



REF. 1195

- NÍQUEL MATE
- MATT NICKEL

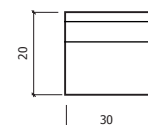
50



REF. 3078

- NÍQUEL MATE
- MATT NICKEL

50



CLASSIC

ASAS DE
MOBILIÁRIO

FURNITURE
HANDLES

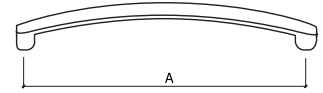


REF. 1004N

-NÍQUEL MATE
-MATT NICKEL

A
96
128
160

50

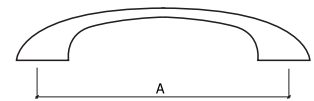


REF. 1010

-NÍQUEL MATE
-MATT NICKEL

A
96
128

50

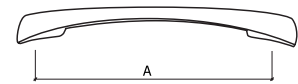


REF. 1052

-CROMADO MATE
-MATT CHROME

A
128

50

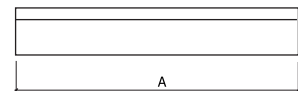


REF. 1085

-ALUMÍNIO MATE
-MATT ALUMINUM

A
96
128
160

50

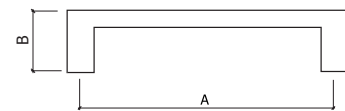


REF. 1092

-NÍQUEL MATE
-MATT NICKEL

| A | B |
|----------|----------|
| 96 | 30 |
| 128 | 30 |
| 160 | 30 |

50

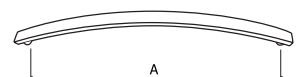


REF. 3052

-CROMADO MATE
-MATT CHROME

A
160

50



CLASSIC

ASAS DE
MOBILIÁRIO

FURNITURE
HANDLES



REF. 3060

-NÍQUEL MATE

-MATT NICKEL

| A | B |
|-----|----|
| 160 | 22 |
| 192 | 22 |
| 224 | 22 |



REF. 3061

-NÍQUEL MATE

-MATT NICKEL

| A | B |
|-----|----|
| 128 | 27 |



REF. 3062

-CROMADO MATE

-MATT CHROME

| A |
|-----|
| 160 |



REF. 3063

-CROMADO MATE

-MATT CHROME

| A |
|-----|
| 160 |



REF. 6670

-CROMADO MATE

-MATT CHROME

| A |
|-----|
| 160 |

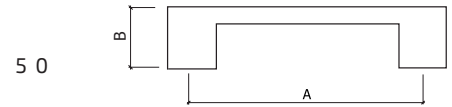


REF. 1420

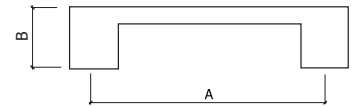
-NÍQUEL MATE

-MATT NICKEL

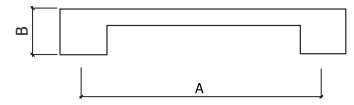
| A | B |
|-----|----|
| 128 | 28 |
| 256 | 28 |



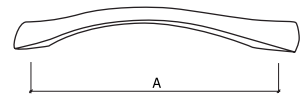
50



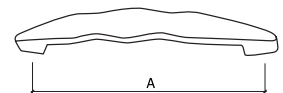
50



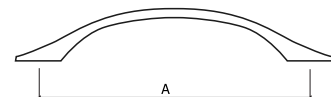
50



50



50



50



CLASSIC

CONCHAS ■ SHELLS

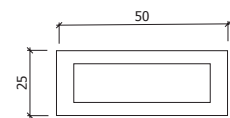
€



REF. 1146

- NÍQUEL MATE
- MATT NICKEL

2 5

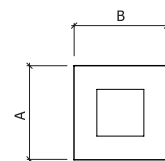


REF. 3038N

- NÍQUEL MATE
- MATT NICKEL

| | A | B |
|---|----|----|
| S | 40 | 40 |
| L | 50 | 50 |

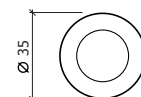
2 5



REF. 3048

- BRONZE
- BRONZE
- NÍQUEL MATE
- MATT NICKEL

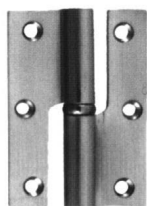
1 0 0



CLASSIC

DOBRADIÇAS
DE PORTA

DOOR
HINGES



REF. 403

-LATÃO BRONZE
-BRONZE BRASS

| | A | B | ESPESSURA |
|----|----|----|-----------|
| 3" | 75 | 47 | 2,5 |

-LATÃO POLIDO
-POLISHED BRASS

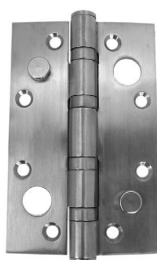
| | A | B | ESPESSURA |
|----|----|----|-----------|
| 3" | 75 | 47 | 2,5 |

-LATÃO BRONZE
-BRONZE BRASS

| | A | B | ESPESSURA |
|------|-----|----|-----------|
| 3,5" | 90 | 56 | 2,5 |
| 4" | 100 | 61 | 2,5 |

-LATÃO POLIDO
-POLISHED BRASS

| | A | B | ESPESSURA |
|------|----|----|-----------|
| 3,5" | 90 | 56 | 2,5 |



REF. 855

C/ROLAMENTOS
W/BEARINGS

-LATÃO BRONZE
-BRONZE BRASS

| A | B | ESPESSURA |
|-----|----|-----------|
| 123 | 76 | 3 |

C/ROLAMENTOS
W/BEARINGS

-LATÃO POLIDO
-POLISHED BRASS

| A | B | ESPESSURA |
|-----|----|-----------|
| 123 | 76 | 3 |



REF. 1330

-ALUMÍNIO BRONZE

-BRONZE ALUMINUM

-ALUMÍNIO DOURADO

-GOLDEN ALUMINUM

-ALUMÍNIO F6(INOX)

-F6 ALUMINUM

-ALUMÍNIO LACADO BRANCO

-WHITE LACQUERED ALUMINUM

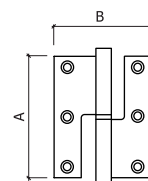
-ALUMÍNIO PRATA

-SILVER ALUMINUM

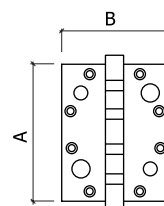
€



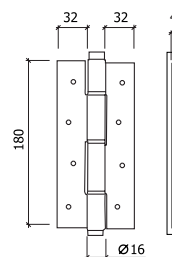
12



6



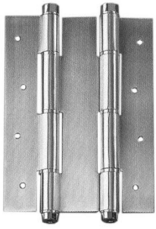
10



CLASSIC

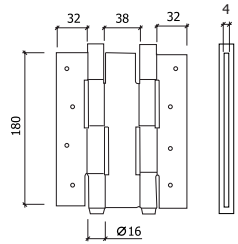
DOBRAÇAS
DE VAI-VEM

SPRING
HINGES



REF. 2330

- ALUMÍNIO BRONZE
- BRONZE ALUMINUM
- ALUMÍNIO DOURADO
- GOLDEN ALUMINUM
- ALUMÍNIO F6(INOX)
- F6 ALUMINUM
- ALUMÍNIO LACADO BRANCO
- WHITE LACQUERED ALUMINUM
- ALUMÍNIO PRATA
- SILVER ALUMINUM



6

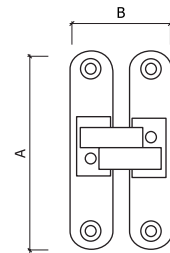


REF. 414 3/D

- CROMADO MATE
- MATT CHROME

| A | B |
|----|----|
| 95 | 58 |

*DIREITA E ESQUERDA
*RIGHT AND LEFT



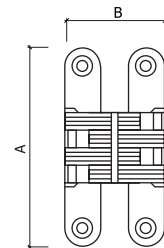
6



REF. 411

- CROMADO MATE
- MATT CHROME

| A | B |
|----|----|
| 45 | 34 |
| 60 | 35 |
| 70 | 42 |



6

CLASSIC

DOBRADIÇAS
DE MOBILIÁRIO

FURNITURE
HINGES



REF. 460

- BRONZE
- BRONZE

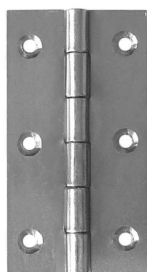
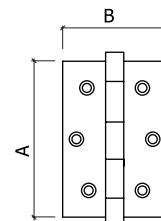
| A | B | ESPESSURA |
|----|----|-----------|
| 50 | 40 | 1,5 |
| 60 | 40 | 1,5 |
| 70 | 50 | 1,5 |

- LATÃO POLIDO
- POLISHED BRASS

| A | B | ESPESSURA |
|----|----|-----------|
| 50 | 40 | 1,5 |
| 60 | 40 | 1,5 |
| 70 | 50 | 1,5 |



2 0



REF. 5001

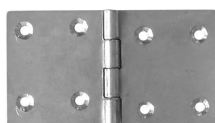
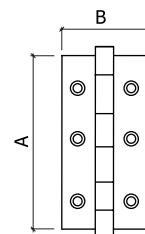
- FERRO ZINCADO
- GALVANIZED STEEL

| | A | B | ESPESSURA |
|------|----|----|-----------|
| 1" | 25 | 22 | 1 |
| 1,5" | 38 | 27 | 1 |
| 2" | 51 | 31 | 1 |
| 2,5" | 64 | 36 | 1 |
| 3" | 75 | 41 | 1 |

- LATÃO
- BRASS

| | A | B | ESPESSURA |
|------|----|----|-----------|
| 1" | 25 | 22 | 1 |
| 1,5" | 38 | 27 | 1 |
| 2" | 51 | 31 | 1 |
| 2,5" | 64 | 36 | 1 |
| 3" | 75 | 41 | 1 |

2 4

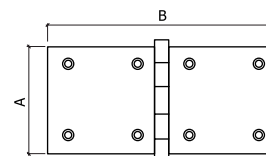


REF. 816

- FERRO ZINCADO
- GALVANIZED STEEL

| | A | B | ESPESSURA |
|--------|----|-----|-----------|
| 1" | 25 | 45 | 1 |
| 1" 1/4 | 32 | 59 | 1,5 |
| 1,5" | 38 | 71 | 1,5 |
| 2" | 51 | 94 | 1,5 |
| 2,5" | 64 | 122 | 2 |
| 3" | 75 | 148 | 2 |

2 4



CLASSIC

B A T E N T E S
P A V I M E N T O

D O O R
S T O P P E R S

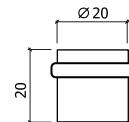


REF. 820

- BRONZE
- BRONZE
- LATÃO POLIDO
- POLISHED BRASS



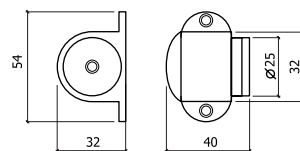
5 0



REF. 5037

- BRONZE
- BRONZE
- NÍQUEL MATE
- MATT NICKEL

2 5



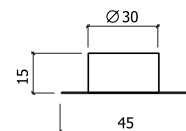
C/ MAGNÉTICO
W/ MAGNETIC



REF. 1330

- BRANCO/BEJE/CASTANHO/
PRETO/CINZA
- WHITE/BRONW/BEIGE/
BLACK/GREY
- MADEIRA/BEJE
- WOOD/BEIGE
- MADEIRA/CASTANHO
- WOOD/BROWN

5 0



C/AUTOCOLANTE
W/STICKER



REF. 10

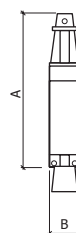
- CROMADO MATE
- MATT CHROME
- LACADO BRANCO
- WHITE LACQUERED
- A B
- 125 25

1 0

REF. 11

- CROMADO MATE
- MATT CHROME
- LACADO BRANCO
- WHITE LACQUERED
- A B
- 165 30

1 0



CLASSIC

CABIDES ■ HANGERS



REF. 620

- ALUMÍNIO BRONZE
- BRONZE ALUMINUM
- ALUMÍNIO DOURADO
- GOLDEN ALUMINUM
- ALUMÍNIO F6(COR INOX)
- F6(INOX COLOR) ALUMINUM

- ALUMÍNIO MATE
- MATT ALUMINUM

- LACADO BRANCO
- WHITE LACQUERED



REF. 623

- ALUMÍNIO BRONZE
- BRONZE ALUMINUM
- ALUMÍNIO DOURADO
- GOLDEN ALUMINUM
- ALUMÍNIO F6(COR INOX)
- F6(INOX COLOR) ALUMINUM

- ALUMÍNIO MATE
- MATT ALUMINUM

- LACADO BRANCO
- WHITE LACQUERED



REF. 5028

- ALUMÍNIO F6(COR INOX)
- F6(INOX COLOR) ALUMINUM
- BRONZE
- BRONZE

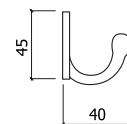


REF. 5035

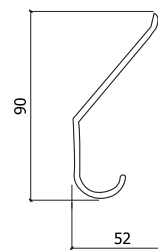
- NÍQUEL MATE
- MATT NICKEL



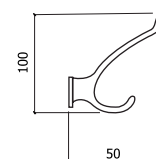
2 4



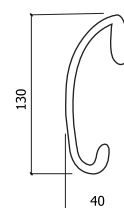
2 4



2 4



1 2



CLASSIC

CABIDES ■ HANGERS

€

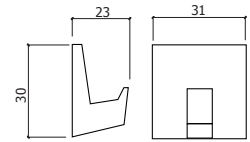


REF. 2207

-BRANCO
-WHITE

BL2

25
BLISTER
2 Pcs

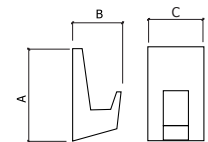


REF. 2216

-BRANCO
-WHITE

| A | B | C | |
|----|----|----|-----|
| 34 | 20 | 14 | BL2 |

25
BLISTER
2 Pcs

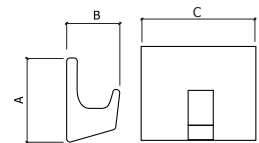


REF. 2217

-BRANCO
-WHITE

| A | B | C | |
|----|----|----|-----|
| 34 | 50 | 24 | BL2 |

25
BLISTER
2 Pcs

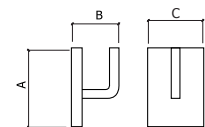


REF. 2218

-BRANCO
-WHITE

| A | B | C | |
|----|----|----|-----|
| 28 | 24 | 21 | BL2 |

25
BLISTER
2 Pcs

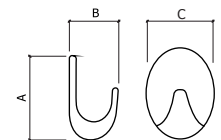


REF. 2220

-BRANCO
-WHITE

| A | B | C | |
|----|----|----|-----|
| 39 | 27 | 19 | BL2 |

25
BLISTER
2 Pcs



REF. 2221

-BRANCO
-WHITE

| A | B | C | |
|----|----|----|-----|
| 58 | 42 | 29 | BL2 |

CLASSIC

SUPOORTE DE
CORRIMÃO

HANDRAIL
SUPPORT

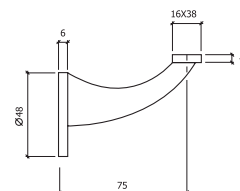
€



REF. 874

- BRONZE
- BRONZE
- LATONADO
- BRASS PLATED
- NÍQUEL MATE
- MATT NICKEL

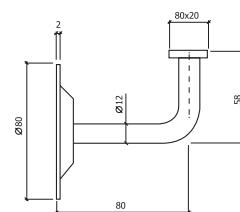
12



REF. SC10

- LACADO BRANCO
- WHITE LACQUERED
- LACADO PRETO
- BLACK LACQUERED

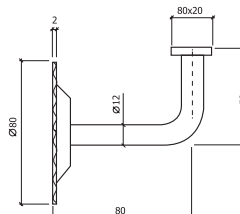
10



REF. SC12

- LACADO PRETO
- BLACK LACQUERED

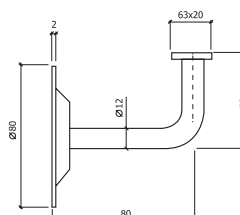
10



REF. SC14

- CROMADO
- CHROME
- LACADO BRANCO
- WHITE LACQUERED
- LACADO PRETO
- BLACK LACQUERED

10



CLASSIC

S U P O R T E S
P A R A V I D R O

G L A S S
H O L D E R S



REF. 28

- CROMADO MATE
- MATT CHROME

- NÍQUEL MATE
- MATT NICKEL



REF. 29

- CROMADO MATE
- MATT CHROME

- NÍQUEL MATE
- MATT NICKEL



REF. 31

- CROMADO MATE
- MATT CHROME

- NÍQUEL MATE
- MATT NICKEL



REF. 33

- CROMADO MATE
- MATT CHROME

- NÍQUEL MATE
- MATT NICKEL



REF. 35

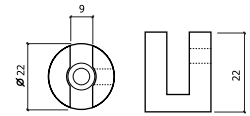
- CROMADO MATE
- MATT CHROME

- NÍQUEL MATE
- MATT NICKEL

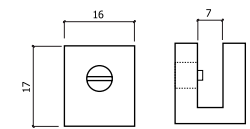
€



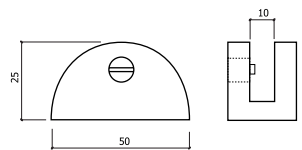
50



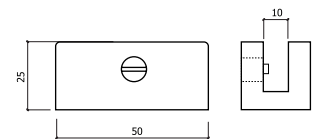
50



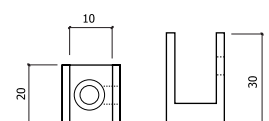
20



20



20



CLASSIC

SUPTES
PELICANO

ADJUSTABLE
SHELF HOLDERS



REF. 912

-CROMADO BRILHANTE
-BRIGHT CHROME

PAR PAIR

-CROMADO MATE
-MATT CHROME

PAR PAIR

-DOURADO
-GOLDEN

PAR PAIR

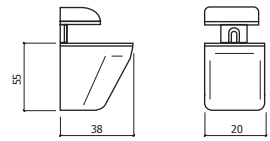
-LACADO BRANCO
-WHITE LACQUERED

PAR PAIR

€



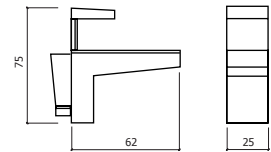
BLISTER
1PAR 1PAIR
CAIXA
10 PARES
10 PAIRS



REF. 914

-NÍQUEL MATE
-MATT NICKEL

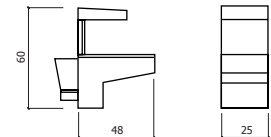
2 0



REF. 915

-NÍQUEL MATE
-MATT NICKEL

2 0



REF. 40

-CROMADO MATE
-MATT CHROME
-NÍQUEL MATE
-MATT NICKEL

| A | B | C |
|----|----|----|
| 50 | 30 | 16 |

2 0

REF. 41

-CROMADO MATE
-MATT CHROME
-NÍQUEL MATE
-MATT NICKEL

| A | B | C |
|----|----|----|
| 40 | 26 | 14 |

2 0

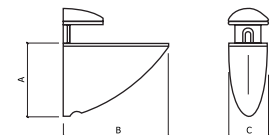


REF. 42

-CROMADO MATE
-MATT CHROME
-NÍQUEL MATE
-MATT NICKEL

| A | B | C |
|----|----|----|
| 75 | 35 | 25 |

2 0



REF. 43

-CROMADO MATE
-MATT CHROME
-NÍQUEL MATE
-MATT NICKEL

| A | B | C |
|-----|----|----|
| 105 | 45 | 40 |

2 0

CLASSIC

CREMONES

WINDOW
HARDWARE



REF. 895

- BRONZE
- BRONZE
- LATÃO POLIDO
- POLISHED BRASS
- NÍQUEL MATE
- MATT NICKEL



REF. 896

- BRONZE
- BRONZE
- LATÃO POLIDO
- POLISHED BRASS
- NÍQUEL MATE
- MATT NICKEL



REF. 897

- BRONZE
- BRONZE



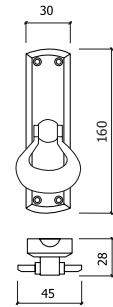
REF. 898

- BRONZE
- BRONZE

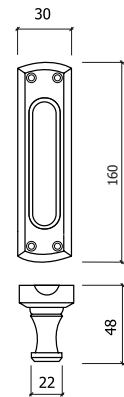
€



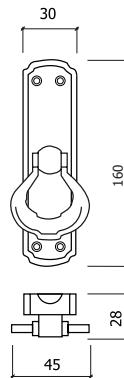
6



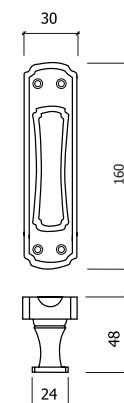
6



6



6





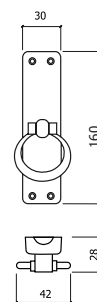
REF. 160/3

- BRONZE
- BRONZE
- DOURADO
- GOLDEN
- CROMADO BRILHANTE
- BRIGHT CHROME
- CROMADO MATE
- MATT CHROME

€



6



REF. 100-P

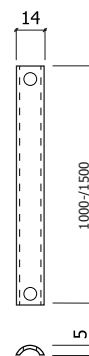
- VARETA DE PERFIL
- LATÃO BRONZE
 - BRONZE BRASS
 - LATÃO POLIDO
 - POLISHED BRASS
 - NÍQUEL MATE
 - MATT NICKEL

6

REF. 100-M

- VARETA MACIÇA
- LATÃO BRONZE
 - BRONZE BRASS
 - LATÃO POLIDO
 - POLISHED BRASS
 - NÍQUEL MATE
 - MATT NICKEL

6



REF. 100-C

- VARETA DE CHAPA
- BRONZE
 - BRONZE
 - INOX BRILHANTE
 - BRIGHT STAINLESS STEEL
 - INOX MATE
 - MATT STAINLESS STEEL

12



CLASSIC

FERRAGEM
RÚSTICA

RUSTIC
HARDWARE

€

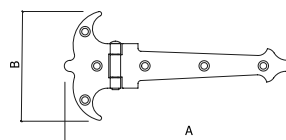


REF. 1551

-PRETO ENVELHECIDO
-WEATHERED BLACK

| A | B |
|-----|-----|
| 90 | 55 |
| 120 | 73 |
| 150 | 100 |

2 0

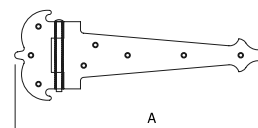


REF. 1554

-PRETO ENVELHECIDO
-WEATHERED BLACK

| A |
|-----|
| 250 |
| 300 |

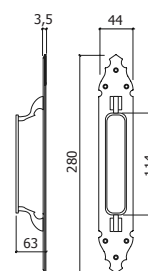
1 0



REF. 1106

-PRETO ENVELHECIDO
-WEATHERED BLACK

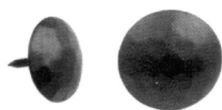
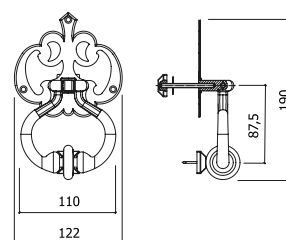
2



REF. 1001

-PRETO ENVELHECIDO
-WEATHERED BLACK

2

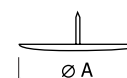


REF. 15

-PRETO ENVELHECIDO
-WEATHERED BLACK

| A |
|----|
| 25 |
| 30 |

1 0 0



CLASSIC

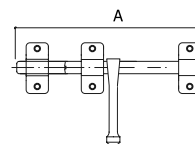
FERRAGEM
RÚSTICA

RUSTIC
HARDWARE



REF. 1584

-PRETO ENVELHECIDO
-WEATHERED BLACK
A
120
160

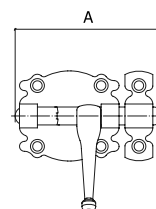


5



REF. 1484

-PRETO ENVELHECIDO
-WEATHERED BLACK
A
60
100
120

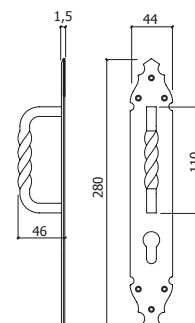


20



REF. 1105

-PRETO ENVELHECIDO
-WEATHERED BLACK

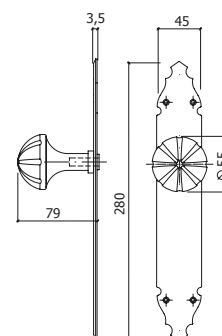


2



REF. 1118

-PRETO ENVELHECIDO
-WEATHERED BLACK
A B
118 55



2

CLASSIC

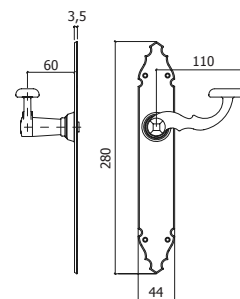
FERRAGEM
RÚSTICA

RUSTIC
HARDWARE



REF. 1108

-PRETO ENVELHECIDO
-WEATHERED BLACK

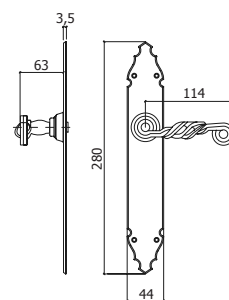


1



REF. 1102

-PRETO ENVELHECIDO
-WEATHERED BLACK

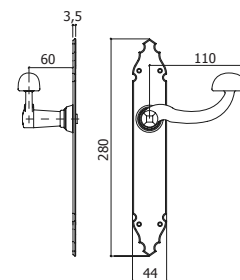


1



REF. 1128

-PRETO ENVELHECIDO
-WEATHERED BLACK



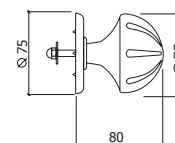
1



REF. 1116

-PRETO ENVELHECIDO
-WEATHERED BLACK

| A | B |
|-----|----|
| 116 | 75 |



1



T E C H N I C

FECHADURAS R I M
DE SOBREPOR LOCKS

regulex
Inovando a Segurança

REGISTO INPI
Nº 10428



REF. A380 x12

CAIXA PINTADA
PAINTED BOX
CILINDRO REGULÁVEL
ADJUSTABLE CYLINDER
ENTRADA REGULÁVEL 55-75mm
ADJUSTABLE BACKSEAT 55-75mm



REF. 1250

CAIXA PINTADA
PAINTED BOX
120mm,5 CHAVES DE SEGURANÇA
120mm,5 SECURITY KEYS



REF. 249

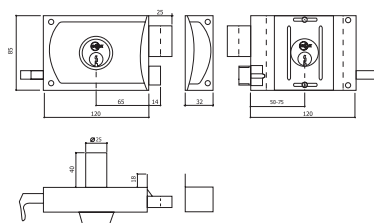
CAIXA PINTADA
PAINTED BOX
100/120mm,5 CHAVES DE SEGURANÇA
100/120mm,5 SECURITY KEYS
-CILINDRO LATÃO CROMADO
-CHROME BRASS CYLINDER

| A | B |
|-----|----|
| 100 | 55 |
| 120 | 65 |

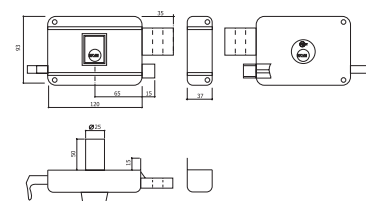
€



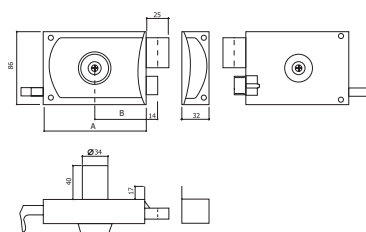
24



24



24



TECHNIC

FECHADURAS DE SOBREPOR ■ RIM LOCKS



REF. 792

CAIXA PINTADA
PAINTED BOX
FECHADURA DE SEGURANÇA DE LANÇAR FECHOS C/2 TRANCAS
SECURITY LOCK W/2
VERTICAL BARS
100/120mm, 5 CHAVES DE SEGURANÇA
100/120mm, 5 SECURITY KEYS
-CILINDRO LATÃO CROMADO
-CHROME BRASS CYLINDER

| A | B |
|-----|----|
| 100 | 65 |
| 120 | 75 |



REF. 9072

CAIXA PINTADA
PAINTED BOX
FECHADURA DE ALTA SEGURANÇA C/2 TRANCAS
HIGH SECURITY LOCK W/
2 VERTICAL BARS
5 CHAVES
5 KEYS



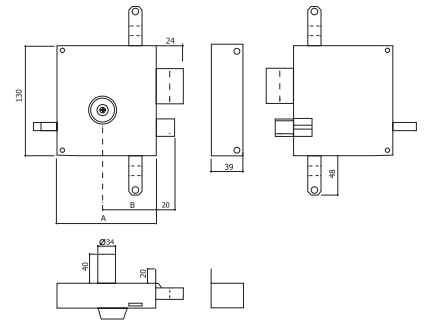
REF. 9072C

CILINDRO PARA FECHADURA 9072
CYLINDER FOR 9072 LOCK

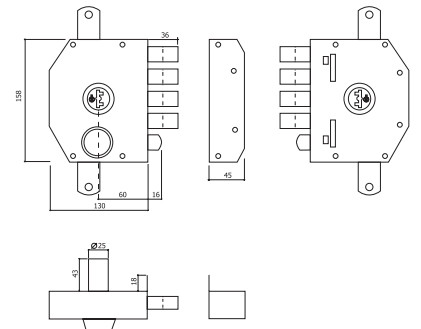


REF. 713

CAIXA PINTADA
PAINTED BOX
80/90/100mm
80/90/100 mm

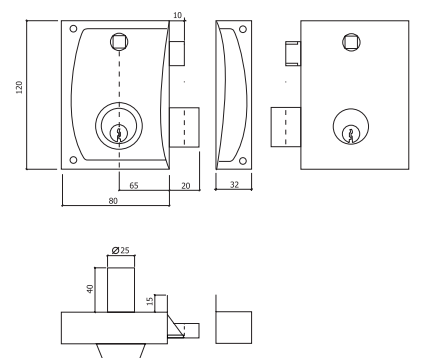
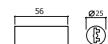


1 2



6

1 / 6



1

T E C H N I C

FECHADURAS DE EMBUTIR
PARA MADEIRA

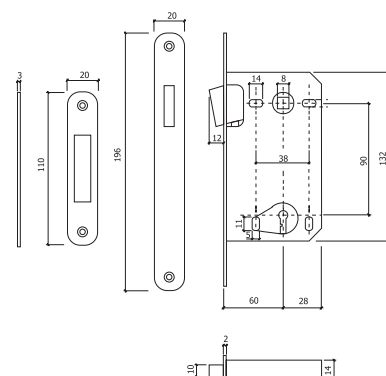
WOOD MORTISE
LOCKS



REF. F22

MAGNÉTICA
MAGNETIC
- CROMADO MATE
- MATT CHROME

6/30

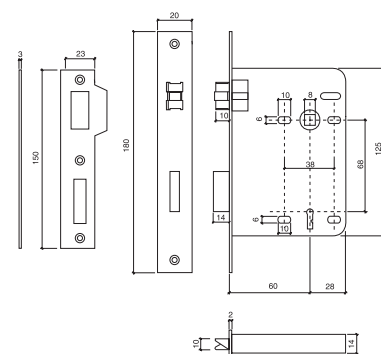


REF. F15

TRINCO SILENCIOSO
SILENT LATCH

- INOX
- STAINLESS STEEL
- LATÃO
- BRASS

6/30

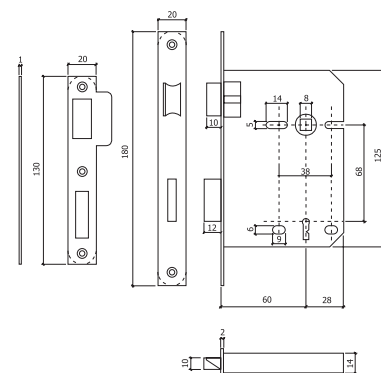


REF. 716

TESTA QUADRADA/REDONDA
SQUARE/ROUND FRONT

- INOX
- STAINLESS STEEL
- BRONZE
- BRONZE

6/48



TECHNIC

FECHADURAS DE EMBUTIR
PARA MADEIRA

WOOD MORTISE
LOCKS

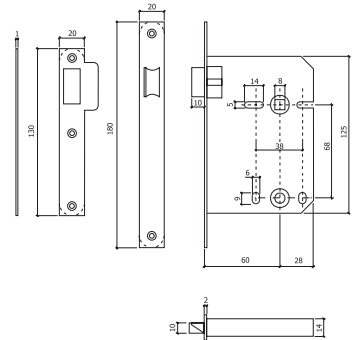


REF. 716WC

-INOX
-STAINLESS STEEL



6

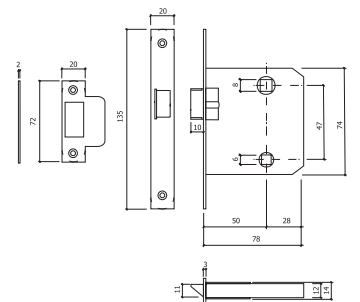


REF. 505

-INOX
-STAINLESS STEEL

-LATONADO
-BRASS PLATED

10

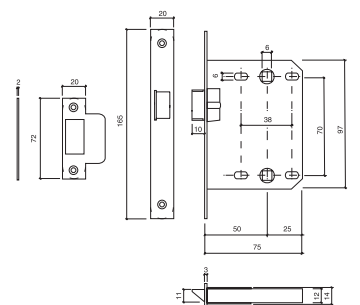


REF. 505

-INOX
-STAINLESS STEEL

-LATONADO
-BRASS PLATED

10



TECHNIC

FECHADURAS DE EMBUTIR
PARA MADEIRA

WOOD MORTISE
LOCKS



REF. 4120

-NÍQUEL MATE
-MATT NICKEL



REF. 4130

-NÍQUEL MATE
-MATT NICKEL



REF. 725

C/CILINDRO P60
W/P60 CYLINDER

-INOX
-STAINLESS STEEL

-BRONZE
-BRONZE

-LATÃO
-BRASS



REF. F90

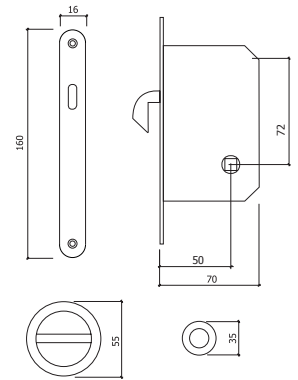
C/CILINDRO P60
W/P60 CYLINDER
TESTA QUADRADA/REDONDA
SQUARE/ROUND FRONT

-INOX
-STAINLESS STEEL

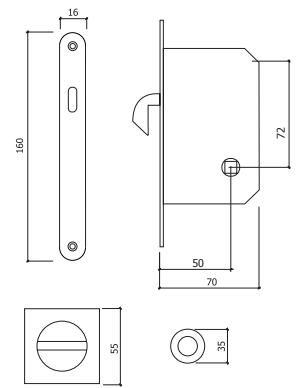
-BRONZE
-BRONZE



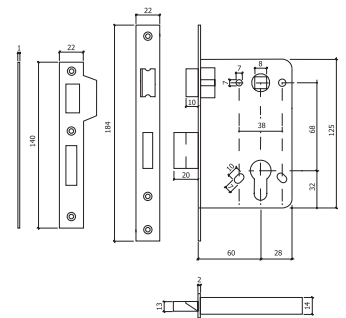
10



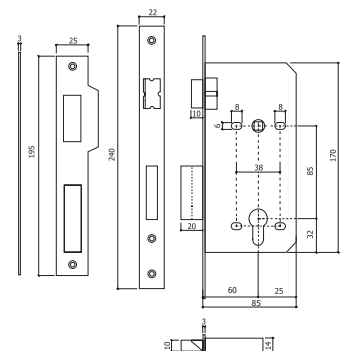
10



20



20



TECHNIC

FECHADURAS DE EMBUTIR
PARA MADEIRA

WOOD MORTISE
LOCKS



REF. 2560

FECHADURA DE SEGURANÇA
3 PONTOS
SECURITY LOCK 3 POINTS

- CROMADO MATE
-MATT CHROME
- DOURADO
-GOLDEN



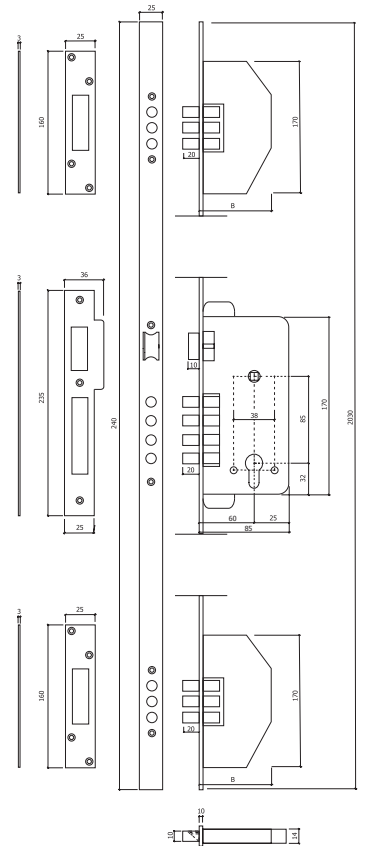
REF. 3200B

CILINDRO G10 (10 PINOS)
G10 CYLINDER (10 PINS)

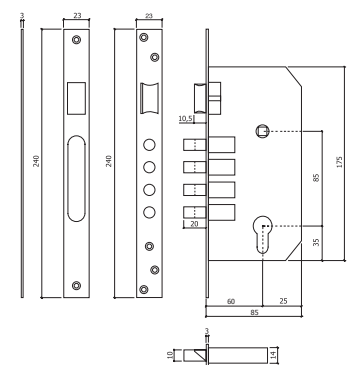
- INOX
-STAINLESS STEEL
- BRONZE
-BRONZE
- LATÃO
-BRASS



1



2 0



TECHNIC

FECHADURAS DE EMBUTIR
PARA MADEIRA

WOOD MORTISE
LOCKS



REF. DX

C/3 CHAVES
W/3 KEYS
-CROMADO
-CHROME



REF. FX

C/5 CHAVES
W/5 KEYS
-CROMADO
-CHROME

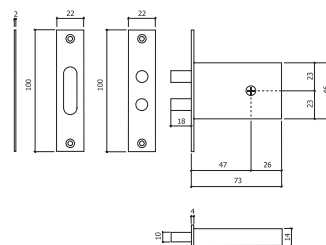


REF. 2930

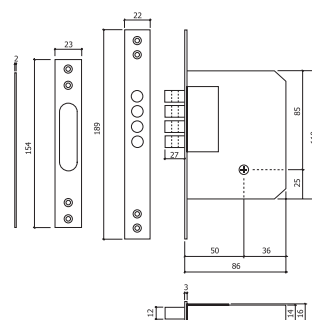
C/5 CHAVES SEGURANÇA
W/5 SECURITY KEYS
-CROMADO
-CHROME



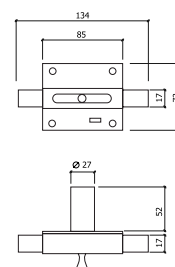
10/100



5/30



1/12



TECHNIC

FECHADURAS
TUBULARES

TUBULAR
LOCKS



REF. 570

- INOX
- STAINLESS STEEL
- BRONZE
- BRONZE
- LATÃO CROMADO
- CHROME BRASS
- LATÃO POLIDO
- POLISHED BRASS



REF. 607

- INOX
- STAINLESS STEEL
- BRONZE
- BRONZE
- LATÃO CROMADO
- CHROME BRASS
- LATÃO POLIDO
- POLISHED BRASS



REF. 5911

- NÍQUEL MATE
- MATT NICKEL



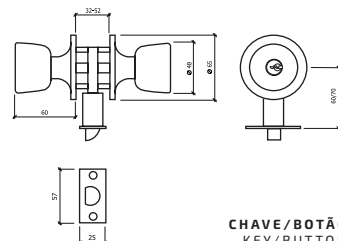
REF. 6313

- NÍQUEL MATE
- MATT NICKEL
- BRONZE
- BRONZE

€

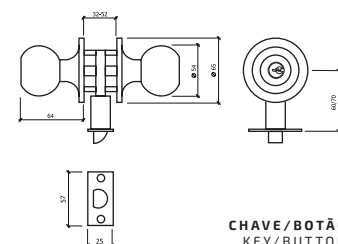


6/30



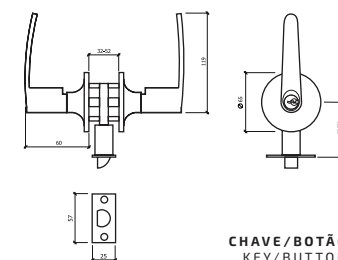
CHAVE/BOTÃO
KEY/BUTTON

6/30



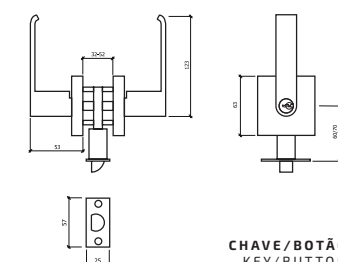
CHAVE/BOTÃO
KEY/BUTTON

1/24



CHAVE/BOTÃO
KEY/BUTTON

1/24



CHAVE/BOTÃO
KEY/BUTTON

TECHNIC

FECHADURAS DE EMBUTIR
PARA PORTA METÁLICA

METAL MORTISE
LOCKS



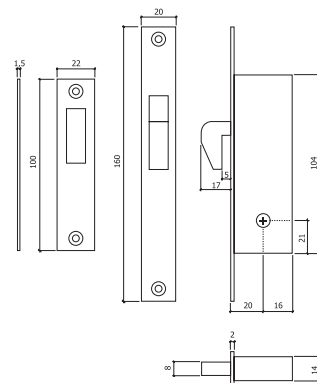
REF. 415BP

-INOX
-STAINLESS STEEL

-INOX C/CHAVES IGUAIS
-STAINLESS STEEL W/KEYED ALIKE



10/60

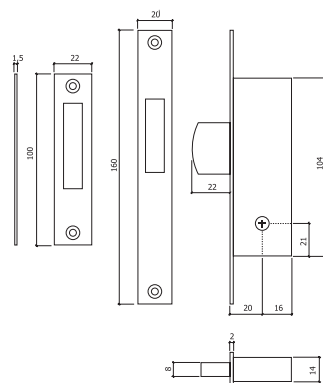


REF. 420LB

-INOX
-STAINLESS STEEL

-INOX C/CHAVES IGUAIS
-STAINLESS STEEL W/KEYED ALIKE

10/60

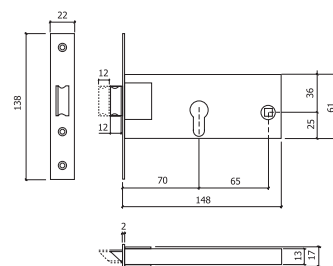


REF. 727

C/CILINDRO P60
W/P60 CYLINDER

-INOX
-STAINLESS STEEL

6 / 4 8



T E C H N I C

FECHADURAS DE EMBUTIR
PARA PORTA METÁLICA

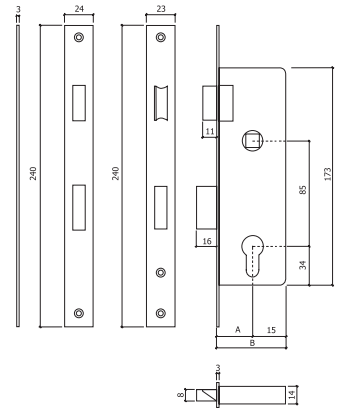
METAL MORTISE
LOCKS



REF. 728LC

C/CILINDRO P60-20/25/30mm
W/P60 CYLINDER-20/25/30mm
-INOX
-STAINLESS STEEL

| A | B |
|----|----|
| 20 | 35 |
| 25 | 40 |
| 30 | 45 |



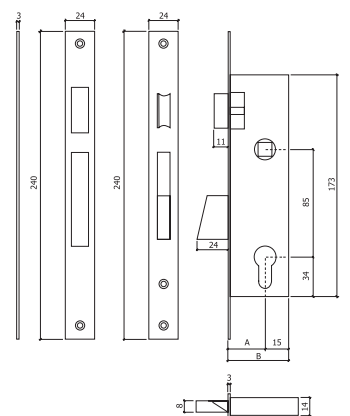
5 / 30



REF. 730LB

C/CILINDRO P60
W/P60 CYLINDER
-INOX
-STAINLESS STEEL

| A | B |
|----|----|
| 25 | 40 |
| 30 | 45 |
| 35 | 50 |



5 / 30

TECHNIC

FECHADURAS DE EMBUTIR
PARA PORTA METÁLICA

METAL MORTISE
LOCKS



REF. 231

C/CILINDRO P60
W/P60 CYLINDER

-GALVANIZADO
-ZINC PLATED

| A | B |
|----|----|
| 30 | 56 |
| 40 | 66 |
| 50 | 76 |



REF. 232

C/CILINDRO P60
W/P60 CYLINDER

-GALVANIZADO
-ZINC PLATED

| A | B |
|----|----|
| 50 | 87 |
| 60 | 97 |



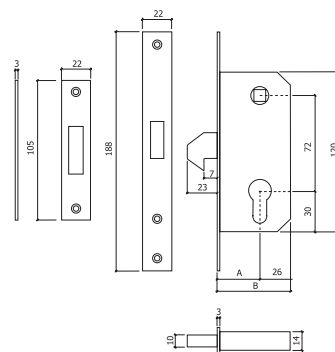
REF. 233

C/CILINDRO P60
W/P60 CYLINDER

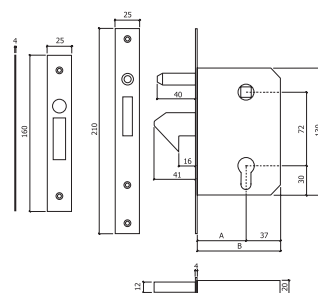
-NIQUELADO
-NICKEL PLATED



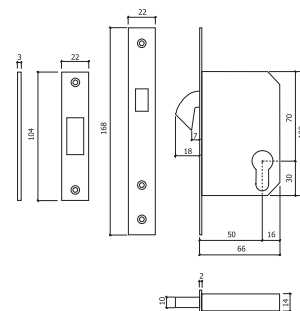
5/20



5/20



5





REF. 8972

CAIXA PINTADA
PAINTED BOX
CHAVE/BOTÃO
KEY/BUTTON

REF. 8992

CAIXA PINTADA
PAINTED BOX
CHAVE/CHAVE
KEY/KEY

- *Tensão 12V.
- *Chapa - Testa regulável na vertical
- *Possibilidade de inibir ou activar a função "fecho diurno", na versão chave/chave.

- * 12V voltage.
- * Plate - Vertically adjustable front
- * Ability to inhibit or activate the "open by day" in the Key/Key version.



REF. CIN

- INOX
- STAINLESS STEEL

- *Pestana de bloqueio do trinco com regulação lateral até 4m/m
- *Alimentação com corrente alternada de 12V, 0.6A
- *Cumpram as normas da Directiva Europeia da Compatibilidade Electromagnética 89/336/CEE
- *Frente em aço inox

- * Latch lock with lateral adjustment up to 4m/m
- * Powered by AC 12V, 0.6A
- * Comply with the standards of the European Directive Compatibility Electromagnetic 89/336 / EEC
- * Front in stainless steel



REF. LBI

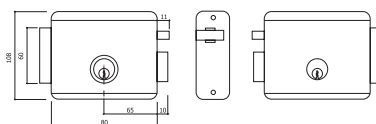
INOX
STAINLESS STEEL

- *Pestana de bloqueio do trinco com regulação lateral até 4m/m
- *Alimentação com corrente alternada de 12V, 0.6A
- *Cumpram as normas da Directiva Europeia da Compatibilidade Electromagnética 89/336/CEE
- *Frente em aço inox

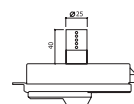
- * Latch lock with lateral adjustment up to 4m/m
- * Powered by AC 12V, 0.6A
- * Comply with the standards of the European Directive Compatibility Electromagnetic 89/336 / EEC
- * Front in stainless steel



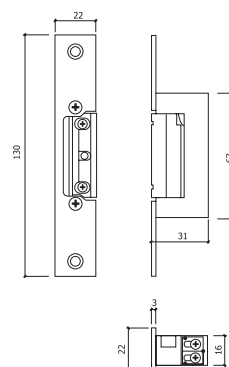
10



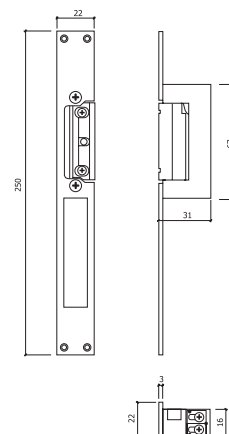
10



1/10



1/10



€



REF. P60

-LATÃO

-BRASS

A

60 (30+30)

70 (40+30)(35+35)

-NIQUELADO

-NICKEL PLATED

A

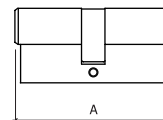
60 (30+30)

70 (40+30)(35+35)

80 (50+30)

90 (60+30)

10 / 100



REF. B60

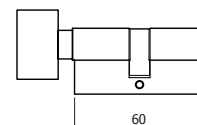
-LATÃO

-BRASS

-NIQUELADO

-NICKEL PLATED

10



REF. G10

-LATÃO

-BRASS

A

60 (30+30)

-NIQUELADO

-NICKEL PLATED

A

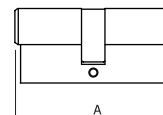
60 (30+30)

70 (30+40)

80 (30+50)

90 (30+60)

10



CILINDRO DE SEGURANÇA
SECURITY CYLINDER
10 PINOS EM DUAS FILAS
10 PINS IN TWO ROWS



REF. G60

-LATÃO
-BRASS

A

60 (30+30)
65 (30+35)
70 (35+35)
70 (30+40)
80 (40+40)
80 (30+50)
90 (30+60)
100 (50+50)

-C/ CHAVES IGUAIS
-C/ BRASS-KEYED ALIKE

A

60 (30+30)
70 (35+35)
70 (30+40)
80 (30+50)

-NIQUELADO
-NICKEL PLATED

A

60 (30+30)
65 (30+35)
70 (35+35)
70 (30+40)
80 (40+40)
80 (30+50)
90 (30+60)
90 (40+50)
100 (50+50)
100 (30+70)

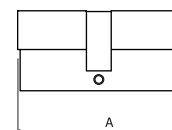
-C/ CHAVES IGUAIS
-W/ KEYED ALIKE

A

60 (30+30)
70 (35+35)
70 (30+40)
80 (30+50)



8/40



€



REF. X18S

-NIQUELADO
-NICKEL PLATED

A

60 (30+30)

65 (30+35)

70 (35+35)

70 (30+40)

80 (30+50)

90 (30+60)

-C/ CHAVES IGUAIS
-W/ KEYED ALIKE

60 (30+30)

70 (30+40)

80 (30+50)

90 (30+60)

-LATÃO
-BRASS

A

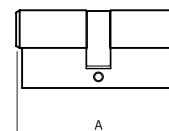
60 (30+30)

-C/ CHAVES IGUAIS
-W/ KEYED ALIKE

60 (30+30)



1



REF. G60B

-LATÃO
-BRASS

A

60 (30+30)

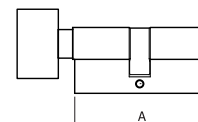
-NIQUELADO
-NICKEL PLATED

A

60 (30+30)



8/40



TECHNIC

MOLAS PARA
PORTA

DOOR
CLOSERS



RYOBI

REF. 9903

PORTAS 65Kg-965mm
DOORS 65Kg- 965mm

- BRONZE
- BRONZE
- LACADO BRANCO
- WHITE LACQUERED
- PRATA
- SILVER



RYOBI

REF. 1554

PORTAS 90Kg-965mm
DOORS 90Kg- 965mm

- PRATA
- SILVER



REF. 401

PORTAS 45Kg 850mm
DOORS 45Kg- 850mm

- PRATA
- SILVER

| A | B | C |
|-----|----|----|
| 175 | 41 | 64 |

REF. 402

PORTAS 75Kg-900mm
DOORS 75Kg-900mm

- BRONZE/LACADO BRANCO/
PRATA
- BRONZE/WHITE
LACQUERED/SILVER

| A | B | C |
|-----|----|----|
| 202 | 44 | 68 |

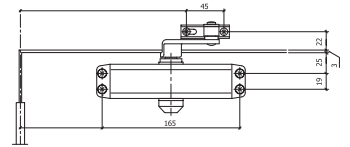


REF. C115

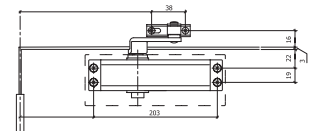
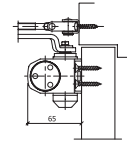
MOLA DE ALAVANCA
LEVER SPRING

- ALUMÍNIO INOX
- STAINLESS STEEL ALUMINUM
- BRONZE
- BRONZE
- LACADO PRETO
- BLACK LACQUERED
- PRATA
- SILVER

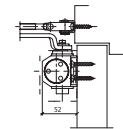
€



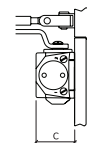
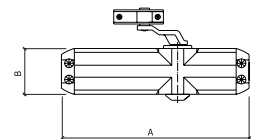
10



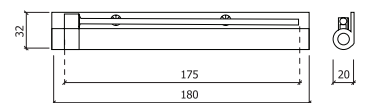
10



12



8



10

REF. 141525

-CROMADO MATE
-MATT CHROME

| A | B |
|-------|----|
| 15-25 | 14 |

-LATÃO BRONZE
-BRONZE BRASS

| A | B |
|-------|----|
| 15-25 | 14 |

-LATÃO POLIDO
-POLISHED BRASS

| A | B |
|-------|----|
| 15-25 | 14 |



REF. 142542

-CROMADO MATE
-MATT CHROME

| A | B |
|-------|----|
| 25-42 | 14 |

-LATÃO POLIDO
-POLISHED BRASS

| A | B |
|-------|----|
| 25-42 | 14 |



REF. 143560

-CROMADO MATE
-MATT CHROME

| A | B |
|-------|----|
| 35-60 | 14 |

-LATÃO BRONZE
-BRONZE BRASS

| A | B |
|-------|----|
| 35-60 | 14 |

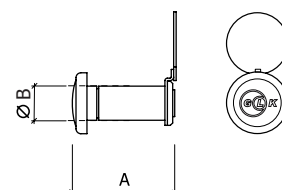
-LATÃO POLIDO
-POLISHED BRASS

| A | B |
|-------|----|
| 35-60 | 14 |

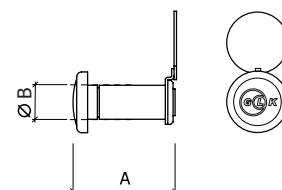
€



20



20



20

TECHNIC

VISORES ■ DOOR VIEWERS

REF. 163560

-CROMADO MATE
-MATT CHROME

| A | B |
|-------|----|
| 35-60 | 16 |

-LATÃO POLIDO
-POLISHED BRASS

| A | B |
|-------|----|
| 35-60 | 16 |



REF. 166085

-CROMADO MATE
-MATT CHROME

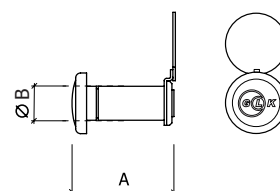
| A | B |
|-------|----|
| 60-85 | 16 |

-LATÃO BRONZE
-BRONZE BRASS

| A | B |
|-------|----|
| 60-85 | 16 |

-LATÃO POLIDO
-POLISHED BRASS

| A | B |
|-------|----|
| 60-85 | 16 |



2 0

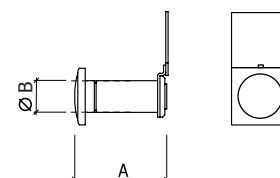
2 0



REF. MCM

-CROMADO MATE
-MATT CHROME

| A | B |
|-------|----|
| 35-60 | 16 |



1 0

€

T E C H N I C

SISTEMAS PARA
PORTAS DE CORRER

SLIDING
DOOR SYSTEMS



REF. 04002

CALHA
RAILING
PORTA 40/80Kg
DOOR 40/80Kg

REF. 0500-10

CALHA
RAILING
PORTA 120Kg
DOOR 120Kg



REF. 04005

ALUMÍNIO
ALUMINUM

| A | B |
|----|----|
| 28 | 25 |

REF. 05005

ALUMÍNIO
ALUMINUM

| A | B |
|----|----|
| 33 | 28 |



REF. J400

PORTA 40Kg
DOOR 40Kg
KIT COMPLETO
SLIDING DOOR SET



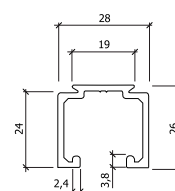
REF. J800

PORTA 80Kg
DOOR 80Kg
KIT COMPLETO
SLIDING DOOR SET

€



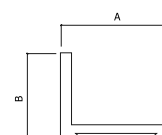
50 m t



**CALHA DE 5mt/4mt/2mt/
RAILING 5mt/4mt/2mt/**

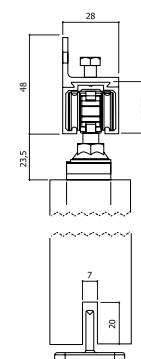
25 m t

25

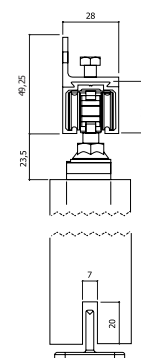


25

1



1

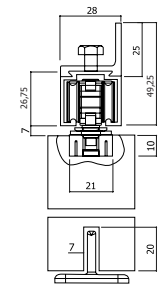




REF. J850

SISTEMA OCULTO
HIDDEN SYSTEM
PORTA 80Kg
DOOR 80Kg
KIT COMPLETO
SLIDING DOOR SET

1 / 10

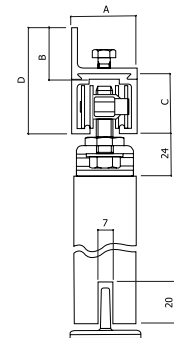


REF. J120

SISTEMA OCULTO
HIDDEN SYSTEM
PORTA 120Kg
DOOR 120Kg
KIT COMPLETO
SLIDING DOOR SET

| A | B | C | D |
|----|----|----|----|
| 33 | 28 | 32 | 56 |

1 / 10



REF. G160E

KIT COMPLETO CALHA C/1,60mt
SLIDING DOOR SET W/1,60m
PORTA 40Kg
DOOR 40Kg

| A | B |
|------|---------|
| 1600 | 710/900 |

1

REF. G200E

KIT COMPLETO CALHA C/2mt
SLIDING DOOR SET W/2m
PORTA 40Kg
DOOR 40Kg

| A | B |
|------|----------|
| 2000 | 910/1200 |

1



REF. G160

KIT COMPLETO CALHA C/1,60mt
SLIDING DOOR SET W/1,60m
PORTA 80Kg
DOOR 80Kg

| A | B |
|------|---------|
| 1600 | 710/900 |

1

REF. G200

KIT COMPLETO CALHA C/2mt
SLIDING DOOR SET W/2m
PORTA 80Kg
DOOR 80Kg

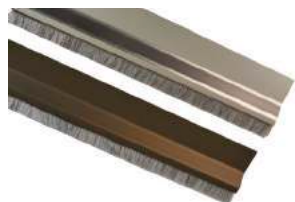
| A | B |
|------|----------|
| 2000 | 910/1200 |

1

TECHNIC

VEDA - PORTAS
TAPA JUNTAS

DRAUGHT EXCLUDER &
CARPET BANDS

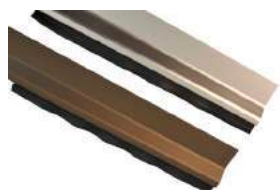


REF. D28

-ALUMÍNIO(COR INOX)
-ALUMINUM

-DOURADO/PRATA/
BRONZE/LACADO BRANCO
-GOLDEN/SILVER/
BRONZE/WHITE LACQUERED

-CARVALHO/MOGNO
-OAK/MAHOGANY



REF. D29

-ALUMÍNIO(COR INOX)
-ALUMINUM

-DOURADO/PRATA/BRONZE /
LACADO BRANCO
-GOLDEN/SILVER/BRONZE/
WHITE LACQUERED

-CARVALHO/MOGNO
-OAK/MAHOGANY



REF. 300

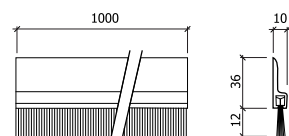
-DOURADO/PRATA
-GOLDEN/SILVER

-CARVALHO/MOGNO
-OAK/MAHOGANY

€

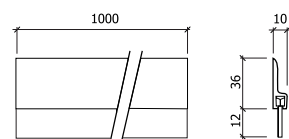


10



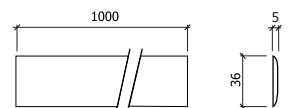
C/ADESIVO E PELUCIA
W/ADHESIVE & PLUSH

10



C/ADESIVO E VEDANTE BORRACHA
W/ADHESIVE & RUBBER SEAL

10

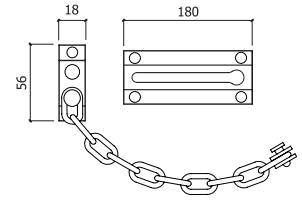


C/ADESIVO
W/ADHESIVE



REF. 300

- CROMADO MATE
- MATT CHROME
- LATÃO CROMADO
- CHROME BRASS
- LATÃO POLIDO
- POLISHED BRASS

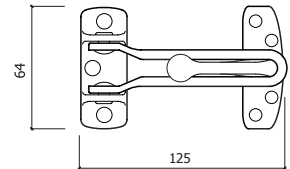


20



REF. 301

- BRONZE
- BRONZE
- NÍQUEL MATE
- MATT NICKEL
- DOURADO
- GOLDEN

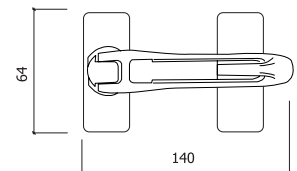


6



REF. 605

- NÍQUEL MATE
- MATT NICKEL



6

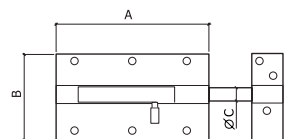


REF. 609

- AÇO TRATADO
- HARDENED STEEL

| A | B | C |
|-----|----|----|
| 70 | 65 | 13 |
| 85 | 65 | 13 |
| 100 | 65 | 13 |
| 120 | 65 | 13 |

*PREÇO S/ CADEADO
*PRICE W/O PADLOCK



10

TECHNICAL

FECHOS DE
SOBREPOR

BARRELS
BOLTS

REF. 1124

-LATÃO BRONZE
-BRASS BRONZE

| | A | B | C |
|-----|-----|----|---|
| 2" | 51 | 26 | 7 |
| 3" | 76 | 26 | 7 |
| 4" | 102 | 26 | 7 |
| 5" | 127 | 26 | 7 |
| 6" | 152 | 26 | 7 |
| 8" | 203 | 26 | 7 |
| 10" | 254 | 26 | 7 |

-LATÃO NÍQUEL MATE
-MATT NICKEL BRASS

| | A | B | C |
|-----|-----|----|---|
| 2" | 51 | 26 | 7 |
| 3" | 76 | 26 | 7 |
| 4" | 102 | 26 | 7 |
| 5" | 127 | 26 | 7 |
| 6" | 152 | 26 | 7 |
| 8" | 203 | 26 | 7 |
| 10" | 254 | 26 | 7 |

-LATÃO POLIDO
-POLISHED BRASS

| | A | B | C |
|-----|-----|----|---|
| 2" | 51 | 26 | 7 |
| 3" | 76 | 26 | 7 |
| 4" | 102 | 26 | 7 |
| 5" | 127 | 26 | 7 |
| 6" | 152 | 26 | 7 |
| 8" | 203 | 26 | 7 |
| 10" | 254 | 26 | 7 |



REF. 800

-NÍQUEL MATE
-MATT NICKEL

| | A | B | C |
|-----|-----|----|----|
| 8" | 203 | 38 | 12 |
| 10" | 254 | 38 | 12 |
| 12" | 305 | 38 | 12 |



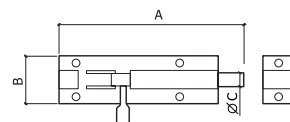
REF. 900

-NÍQUEL MATE
-MATT NICKEL

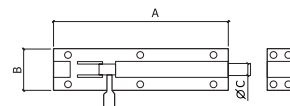
| | A | B | C |
|----|-----|-------|---|
| 4" | 102 | 15x15 | 9 |
| 6" | 150 | 15x15 | 9 |
| 8" | 203 | 15x15 | 9 |



12

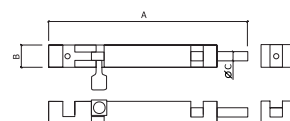


6



FECHO FORTE
STRONG BOLT

6



TECHNIC

FECHOS DE
SOBREPOR

BARRE L
BOLTS



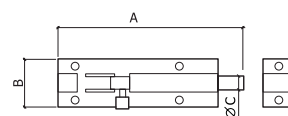
REF. 105

-AÇO INOX SATINADO
-SATIN STAINLESS STEEL

| A | B | C |
|-----|----|---|
| 50 | 35 | 8 |
| 75 | 35 | 8 |
| 100 | 35 | 8 |
| 125 | 35 | 8 |
| 300 | 35 | 8 |



20



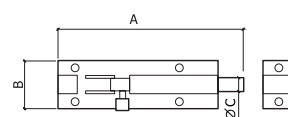
REF. 107

-AÇO INOX SATINADO
-SATIN STAINLESS STEEL

| A | B | C |
|-----|----|----|
| 50 | 27 | 65 |
| 75 | 27 | 65 |
| 100 | 27 | 65 |
| 125 | 27 | 65 |



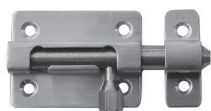
20



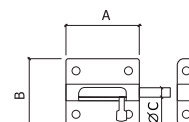
REF. 616

-AÇO INOX SATINADO
-SATIN STAINLESS STEEL

| A | B | C |
|----|----|---|
| 40 | 40 | 9 |
| 50 | 40 | 9 |
| 80 | 40 | 9 |



20



REF. 620

-BRONZE
-BRONZE

| A | B |
|----|----|
| 30 | 42 |
| 40 | 55 |

-LATONADO
-BRASS PLATED

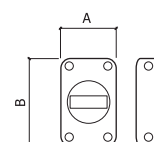
| A | B |
|----|----|
| 30 | 42 |
| 40 | 55 |

-NÍQUEL MATE
-MATT NICKEL

| A | B |
|----|----|
| 30 | 42 |
| 40 | 55 |



20



TECHNIC

FECHOS DE
SOBREPOR

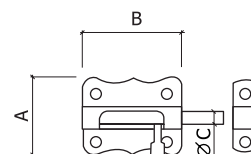
BARREL
BOLTS



REF. 384

- LATONADO
- BRASS PLATED
- NIQUELADO
- NICKEL PLATED

| A | B | C |
|----|----|-----|
| 30 | 33 | 6,5 |
| 40 | 40 | 7,5 |
| 50 | 47 | 9 |
| 60 | 49 | 9 |



20



REF. 401

- AÇO INOX
- SAINLESS STEEL

| A | B | C |
|-----|----|---|
| 150 | 16 | 8 |
| 160 | 16 | 8 |
| 200 | 16 | 8 |
| 250 | 16 | 8 |
| 300 | 16 | 8 |

- FERRO BRONZE
- STEEL BRONZE PLATED

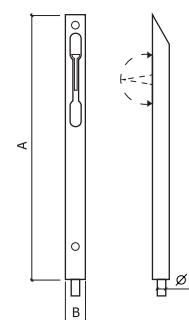
| A | B | C |
|-----|----|---|
| 160 | 16 | 8 |
| 200 | 16 | 8 |
| 250 | 16 | 8 |
| 300 | 16 | 8 |

- FERRO LATONADO
- STEEL BRASS PLATED

| A | B | C |
|-----|----|---|
| 160 | 16 | 8 |
| 200 | 16 | 8 |
| 250 | 16 | 8 |
| 300 | 16 | 8 |

- LATÃO POLIDO
- POLISHED BRASS

| A | B | C |
|-----|----|---|
| 160 | 16 | 8 |
| 200 | 16 | 8 |
| 250 | 16 | 8 |
| 300 | 16 | 8 |



20



TECHNIC

FECHOS PARA
MOBILIÁRIO

FURNITURE
BOLTS



REF. 430

-BRONZE BRONZE

| A | B |
|----|----|
| 32 | 36 |

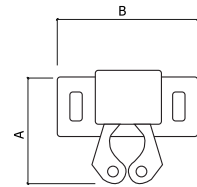
-ZINCADO AMARELO
-YELLOW ZINC

| A | B |
|----|----|
| 32 | 36 |

€



100



REF. 101

-BRANCO WHITE
-CASTANHO BROWN

| A | B |
|----|----|
| 46 | 15 |

REF. 102

-BRANCO WHITE
-CASTANHO BROWN

| A | B |
|----|----|
| 58 | 15 |

100



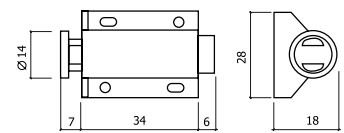
100



REF. 110

-CASTANHO BROWN
-PRETO BLACK

100



FECHO MAGNÉTICO
MAGNETIC BOLT

TECHNIC

FECHOS PARA
MOBILIÁRIO

FURNITURE
BOLTS



REF. 120

-BRANCO WHITE
-PRETO BLACK

REF. 1043

-CROMADO CHROME

A

43

-LATÃO BRASS

A

43

REF. 1050

-CROMADO CHROME

A

50

-LATÃO BRASS

A

50

REF. 1060

-CROMADO CHROME

A

60

-LATÃO BRASS

A

60



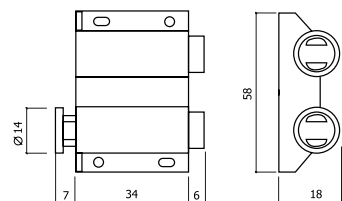
REF. 306C

-BRANCO WHITE
-CASTANHO BROWN

€

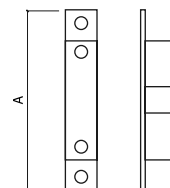


100



FECHO MAGNÉTICO
MAGNETIC BOLT

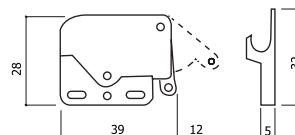
50



50

50

50

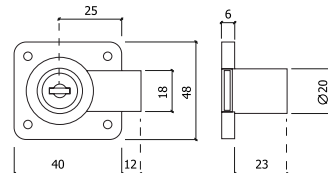




REF. 200

- LATONADO
- BRASS PLATED
- C/ CHAVES IGUAIS
- W/ KEYED ALIKE
- NIQUELADO
- NICKEL PLATED
- C/ CHAVES IGUAIS
- W/ KEYED ALIKE

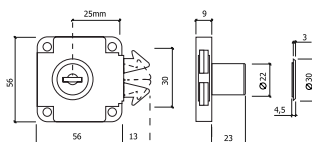
20/200



REF. 202

- NIQUELADO
- NICKEL PLATED

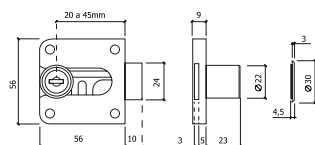
12/240



REF. 206

- BRONZE
- BRONZE
- LATONADO
- BRASS PLATED
- NIQUELADO
- NICKEL PLATED
- NIQUELADO C/ CHAVES IGUAIS
- NICKEL PLATED W/ KEYED ALIKE

10/100



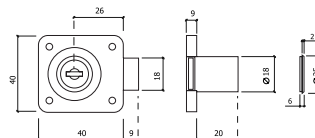
CILINDRO REGULÁVEL
ADJUSTABLE LOCK



REF. 208

- NIQUELADO
- NICKEL PLATED

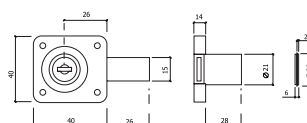
12/120



REF. 209

- NIQUELADO
- NICKEL PLATED

12/60



TECHNIC

FECHADURAS
PARA MOBILIÁRIO

FURNITURE
LOCKS



REF. 203

-NIQUELADO
-NICKEL PLATED



REF. 205

-NIQUELADO
-NICKEL PLATED

REF. 201

PATILHA DIREITA
FLAT
-NIQUELADO
-NICKEL PLATED

REF. 201C

PATILHA CURVA 5mm
CURVED
-NIQUELADO
-NICKEL PLATED

A
5



REF. 201D

PATILHA CURVA 11mm
CURVED
-NIQUELADO
-NICKEL PLATED

A
11

REF. 201

-NIQUELADO
-NICKEL PLATED

A
16
20
25
30

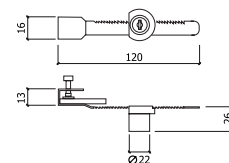


REF. 704E

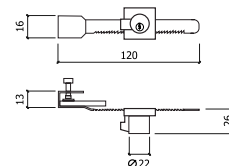
C/ CHAVE TRIANGULAR
TRIANGLE KEY LOCK
-NIQUELADO
-NICKEL PLATED



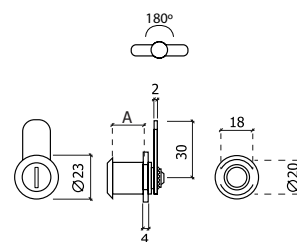
12/120



12/36

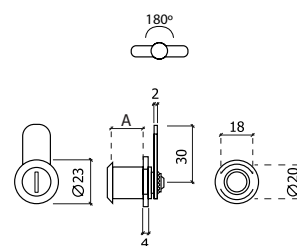


25/250



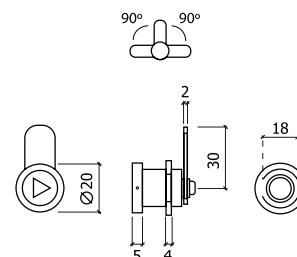
25/250

25/250



25/100

24/240



TECHNIC

SISTEMAS PARA
ROUPEIROS

CLOSET
SYSTEMS

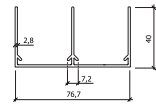


REF. 006

-ALUMÍNIO(COR INOX)
-ALUMINUM(INOX COLOR)

-ALUMÍNIO MATE
-MATT ALUMINUM

5 m / 50 m



REF. 007

-ALUMÍNIO(COR INOX)
-ALUMINUM(INOX COLOR)

-ALUMÍNIO MATE
-MATT ALUMINUM

5 m / 50 m



REF. 920

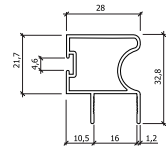
-ALUMÍNIO(COR INOX)
-ALUMINUM(INOX COLOR)

-ALUMÍNIO MATE
-MATT ALUMINUM

-ALUMÍNIO REVESTIDO CARVALHO
-OAK COATED ALUMINUM
-ALUMÍNIO REVESTIDO FAIA
-BEECH COATED ALUMINUM
-ALUMÍNIO REVESTIDO MOGNO
-MAHOGANY COATED ALUMINUM
-ALUMÍNIO REVESTIDO TOLA
-WOOD COATED ALUMINUM

5 m / 100 m

2,5 m / 50 m



REF. 600

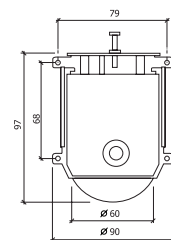
-ZINCADO
-ZINC PLATED

100

REF. 602

-ZINCADO
-ZINC PLATED

100



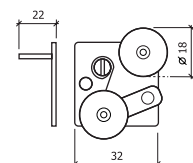
RODA INVERTIDA
INVERTED WHEEL



REF. 601

-ZINCADO
-ZINC PLATED

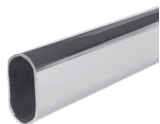
100



TECHNIC

SISTEMAS PARA
ROUPEIROS

CLOSET
SYSTEMS



REF. 653

-CROMADO
-CHROME

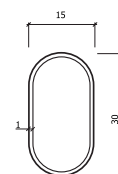
TUBO/m

1
1,25
1,5
2
3
5

€



20 Un



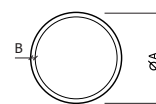
REF. 654

-CROMADO
-CHROME

TUBO/m

| TUBO/m | A | B |
|--------|----|-----|
| 2 | 19 | 1 |
| 3 | 19 | 1 |
| 1 | 25 | 0,8 |
| 1,25 | 25 | 0,8 |
| 2 | 25 | 0,8 |
| 3 | 25 | 0,8 |

20 Un



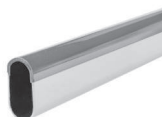
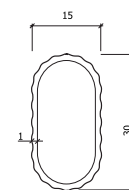
REF. 656

-BRONZE/DOURADO
-BRONZE/GOLDEN

-MATE
-MATT

5 m / 50 m

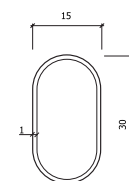
5 m / 100 m



REF. 658

-MATE C/ PVC BRANCO
-MATT W/ WHITE PVC

50 m



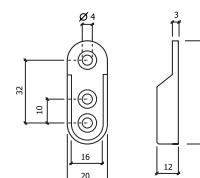
REF. 144

-BRONZE/DOURADO
-BRONZE/GOLDEN

-NÍQUEL MATE
-MATT NICKEL

-CROMADO
-CHROME

100



TECHNIC

SISTEMAS PARA
ROUPEIROS

CLOSET
SYSTEMS



REF. 146

-BRONZE/DOURADO
-BRONZE/GOLDEN

-NÍQUEL MATE
-MATT NICKEL



REF. 148

EXTENSÍVEL
EXTENSIBLE
-NÍQUEL MATE
-MATT NICKEL



REF. 147

-CROMADO
-CHROME

A
19
25



REF. 137

-CROMADO
-CHROME

A
19
25



REF. 666

A
300

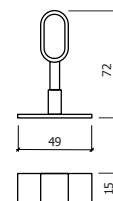


REF. 858

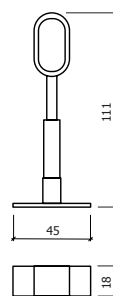
A
279



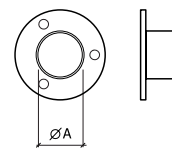
50



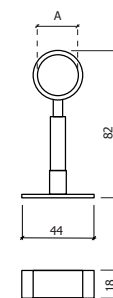
50



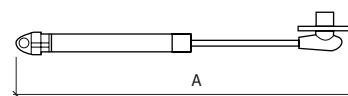
25



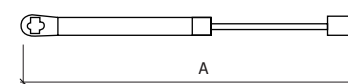
50



10



10



TECHNIC

SISTEMAS PARA
ROUPEIROS

CLOSET
SYSTEMS



REF. 103

-NIQUELADO
-NICKEL PLATED

RECTA INSERT

200

REF. 106

-NIQUELADO
-NICKEL PLATED

MEIA CURVA HALF OVERLAY

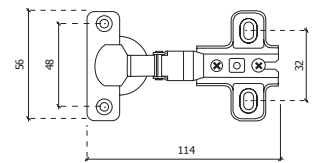
200

REF. 109

-NIQUELADO
-NICKEL PLATED

CURVA TOTAL OVERLAY

200



REF.403

-NIQUELADO
-NICKEL PLATED

RECTA INSERT

200

REF.406

-NIQUELADO
-NICKEL PLATED

MEIA CURVA HALF OVERLAY

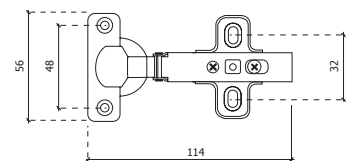
200

REF.409

-NIQUELADO
-NICKEL PLATED

CURVA TOTAL OVERLAY

200



TECHNIC

SISTEMAS PARA
ROUPEIROS

CLOSET
SYSTEMS



REF. 503

-NIQUELADO
-NICKEL PLATED

RECTA INSERT

REF. 506

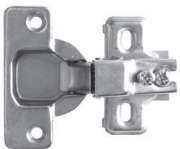
-NIQUELADO
-NICKEL PLATED

MEIA CURVA HALF OVERLAY

REF. 509

-NIQUELADO
-NICKEL PLATED

CURVA TOTAL OVERLAY



REF. 110

-NIQUELADO
-NICKEL PLATED

COMPACTA COMPACT



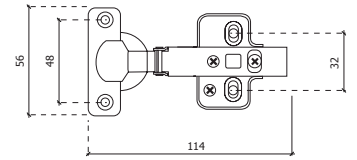
REF. 400

-ZINCADO
-ZINC PLATED

ARTICULADO ARTICULATED



100

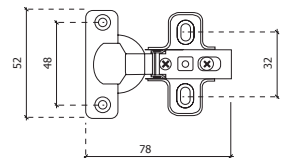


C/AMORTECEDOR
W/DAMPER

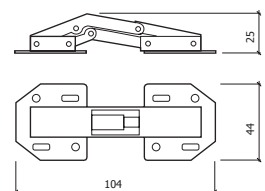
100

100

100



20





REF. 07

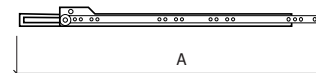
-BRANCO/CASTANHO
-WHITE/BROWN

A

300
350
400
450
500
550
600



25



REF. 17

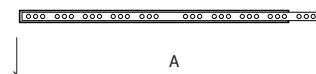
-ZINCADO
-ZINC PLATED

A

246
278
310
342



10



REF. 45

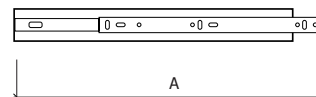
EXTRAÇÃO TOTAL
TOTAL EXTRACTION
-ZINCADO
-ZINC PLATED

A

300
350
400
450
500
550
600



10



TECHNIC

SISTEMAS PARA
ROUPEIROS

CLOSET
SYSTEMS

REF. 1023

-ACABAMENTO INOX
-INOX FINISH

| A | B |
|-----|----|
| 100 | 13 |
| 120 | 13 |
| 150 | 13 |

REF.1023T

TERMINAL TERMINAL
-CINZA GREY

REF. 1023C

CURVA CURVED
-CINZA GREY

| A | B |
|-----|----|
| 100 | 13 |
| 120 | 13 |
| 150 | 13 |



REF. 1034

-PRETO BLACK

| A |
|-----|
| 100 |
| 120 |
| 150 |



REF. 408

-PRETO BLACK

| A | B | C |
|-------|----|----|
| 27-32 | 49 | 10 |
| 44-50 | 49 | 10 |



REF. 1025

-ALUMÍNIO
-ALUMINUM

| A | B | C |
|----|----|-----|
| 30 | 30 | 100 |

€



40 m

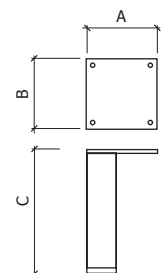
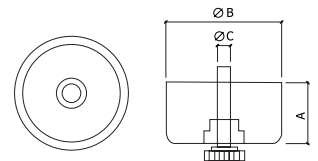
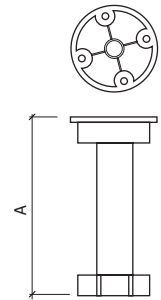
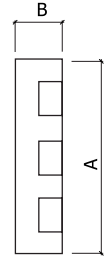
50

25

100

24

24



T E C H N I C

SISTEMAS PARA
ROUPEIROS

CLOSET
SYSTEMS



REF. 1026

-NÍQUEL MATE
-MATT NICKEL

| A | B | C |
|----|----|-----|
| 25 | 25 | 100 |



REF. 1022A

-ALUMÍNIO
-ALUMINUM

| A | B | C |
|----|----|-----|
| 25 | 25 | 100 |



REF. 25

-CROMADO MATE
-MATT CHROME

| A | B | C |
|----|----|-----|
| 25 | 25 | 150 |

-LACADO BRANCO
-WHITE LACQUERED

| A | B | C |
|----|----|-----|
| 25 | 25 | 100 |



REF. 30

-CROMADO MATE
-MATT CHROME

| A | B | C |
|----|----|-----|
| 30 | 30 | 150 |

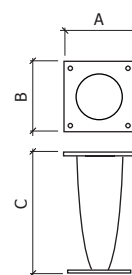
-LACADO BRANCO
-WHITE LACQUERED

| A | B | C |
|----|----|-----|
| 30 | 30 | 100 |

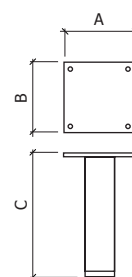
€



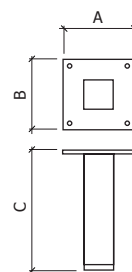
12



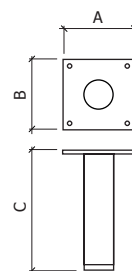
24



16



16





REF. 1014

-BRANCO WHITE

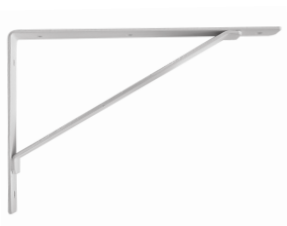
| A | B |
|-----|-----|
| 125 | 100 |
| 150 | 125 |
| 200 | 200 |
| 250 | 200 |
| 300 | 250 |
| 350 | 300 |



REF. 1018

-ALUMÍNIO ALUMINUM
-BRANCO WHITE

| A | B |
|-----|-----|
| 200 | 150 |
| 250 | 200 |
| 300 | 200 |



REF. C2015

REFORÇADO REINFORCED
-BRANCO WHITE

| A | B |
|-----|-----|
| 200 | 150 |

REF. C3020

-BRANCO WHITE

| A | B |
|-----|-----|
| 300 | 200 |

REF. C4025

-BRANCO WHITE

| A | B |
|-----|-----|
| 400 | 250 |

REF. C5033

-BRANCO WHITE

| A | B |
|-----|-----|
| 500 | 330 |

REF. C6040

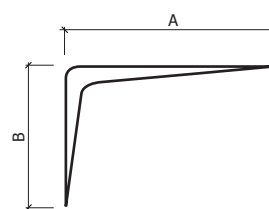
-BRANCO WHITE

| A | B |
|-----|-----|
| 600 | 400 |

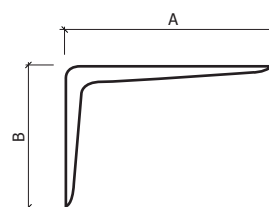
€



2 0

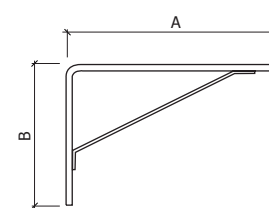


2 5



2 0

2 0



2 0

2 0

2 0



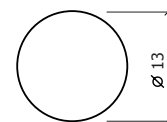
REF. 782

- BRANCO/WHITE
- CARVALHO/OAK
- CEREJEIRA/CHERRY
- CINZENTO/GREY
- FAIA/BEECH
- KAMBALA/KAMBALA
- MOGNO/MAHOGANY
- NOGUEIRA/NUTWOOD
- PINHO/PINE
- TOLA/TOLA
- WENGUÉ/WENGE

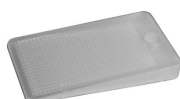
€



1000 Un



TAPA PARAFUSOS
SCREW COVER

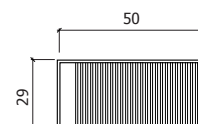


REF. 2729

- TRANSPARENTE
- TRANSPARENT

BL2

30 Un
BLISTER

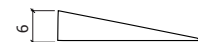


REF. 2730

- PRETO
- BLACK

BL2

30 Un
BLISTER



REF. 3801

- BORRACHA CASTANHO
- BROWN RUBBER

BL2

30 Un
BLISTER

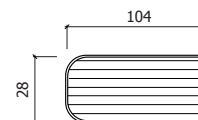


REF. 3802

- BORRACHA BRANCA
- WHITE RUBBER

BL2

30 Un
BLISTER



REF. 3862

- BORRACHA COR MADEIRA
- WOOD COLOR RUBBER

BL2

30 Un
BLISTER

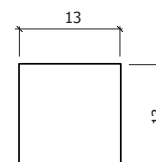


REF. 2603

- BATENTE QUADRADO
- SQUARE STOPPER
- ADESIVO TRANSPARENTE
- TRANSPARENT ADHESIVE

BL9

12 Un
BLISTER

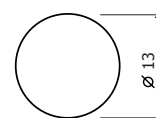


REF. 2611

- BATENTE ANTI-DERRAPANTE
- ANTI-SLIP STOPPER
- BORRACHA COR CASTANHO
- BROWN RUBBER

BL12

12 Un
BLISTER



C/FELTRO
W/ STICKER

TECHNIC

ACESSÓRIOS
PARA MOBILIÁRIO

FURNITURE
ACCESSORIES



REF. 2725
BATENTE ANTI-DERRAPANTE
C/ PARAFUSO
ANTI-SLIP STOPPER W/ BOLT

BL6

€



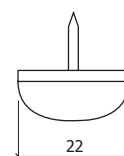
25 Un
BLISTER



REF. 2920
-BEJE
-BEIGE

BL6

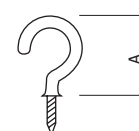
25 Un
BLISTER



REF. 2136
-PLASTIFICADO BRANCO
-WHITE COATED

A
25 BL4

25 Un
BLISTER



REF. 2140
-PLASTIFICADO BRANCO
-WHITE COATED

A
32 BL6

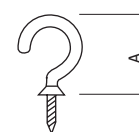
25 Un
BLISTER



REF. 2141
-LATONADO
-BRASS PLATED

A
25 BL4

25 Un
BLISTER



TECHNIC

ACESSÓRIOS
PARA MOBILIÁRIO

FURNITURE
ACCESSORIES



REF. A110

-BRANCO/TRANSPARENTE/
CASTANHO
-WHITE/TRANSPARENT/
BROWN

€



1000



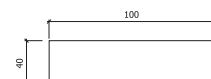
SUPORTE PRATELEIRA
SHELF SUPPORT



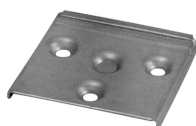
REF. E102

-ZINCO
-ZINC

50



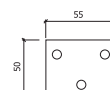
SUPORTE ARMÁRIO
CABINET SUPPORT



REF. E104

-ZINCO
-ZINC

100



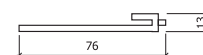
SUPORTE ARMÁRIO
CABINET SUPPORT



REF. E106

-ZINCO
-ZINC

100



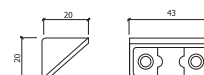
SUPORTE ARMÁRIO
CABINET SUPPORT



REF. A124

-BRANCO/BEJE/CASTANHO
-WHITE/BEIGE/BROWN

250



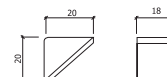
CANTO FIXAÇÃO
FIXING CORNER



REF. A126

-BRANCO/BEJE/CASTANHO
-WHITE/BEIGE/BROWN

500



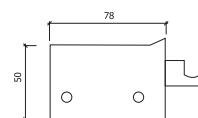
CANTO FIXAÇÃO
FIXING CORNER



REF. E110

-BRANCO/CASTANHO
-WHITE/BROWN

100



NIVELADOR
LEVELER

TECHNIC

ACESSÓRIOS
PARA MOBILIÁRIO

FURNITURE
ACCESSORIES

REF. 1203

PLÁSTICO+METAL
PLASTIC+METAL
A

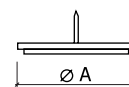
20
25
30



€

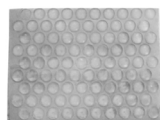


100

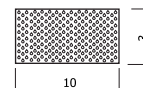


REF. 1316

-TRANSPARENTE
-TRANSPARENT



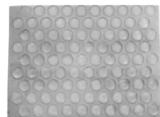
1000



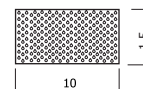
BATENTE
DRAWER STOPPER

REF. 1318

-TRANSPARENTE
-TRANSPARENT



1000



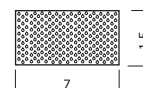
BATENTE
DRAWER STOPPER

REF. 1320

-TRANSPARENTE
-TRANSPARENT



1000



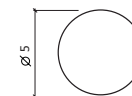
BATENTE
DRAWER STOPPER

REF. 1172

-NIQUELADO
-NICKEL PLATED



500



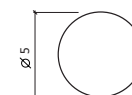
PARTILHA
SHELF HOLDER

REF. 1136

-LATONADO
-BRASS PLATED



1000



PARTILHA
SHELF HOLDER

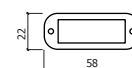
REF. 1310

-BRANCO/VERMELHO/
MARFIM/PRETO/CINZA/
LARANJA/AZUL/VERDE
-WHITE/RED/IVORY/BLACK/
GREY/ORANGE/BLUE/GREEN

BL8

25

BL20



TECHNIC

SINALÉTICA
DE ALUMÍNIO

ALUMINUM
PICTOGRAMS



REF. 46

-ALUMÍNIO
-ALUMINUM



REF. 134

-ALUMÍNIO
-ALUMINUM



REF. 233

-ALUMÍNIO
-ALUMINUM



REF. 111

-ALUMÍNIO
-ALUMINUM



REF. 768

-ALUMÍNIO
-ALUMINUM

*FRENTE E VERSO
*FRONT AND BACK



5



5



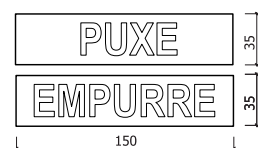
10



10



10



T E C H N I C

S I N A L É T I C A
D E A L U M Í N I O

A L U M I N U M
P I C T O G R A M S

EMPURRE

REF. 103A

-ALUMÍNIO
-ALUMINUM

€



10



PUXE

REF. 106A

-ALUMÍNIO
-ALUMINUM

10



HOMENS

REF. 107A

-ALUMÍNIO
-ALUMINUM

10



SENHORAS

REF. 109A

-ALUMÍNIO
-ALUMINUM

10

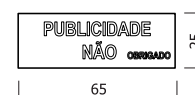


**PUBLICIDADE
NÃO** OBRIGADO

REF. 117

-ALUMÍNIO
-ALUMINUM

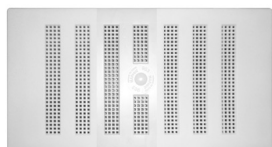
10



T E C H N I C

V E N T I L A D O R E S ■ V E N T S

€ 



REF. 703

-BRANCO
-WHITE

A B
150 75

REF. 704

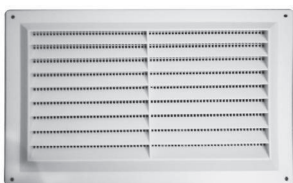
-BRANCO
-WHITE

A B
225 75

REF. 705

-BRANCO
-WHITE

A B
225 150



REF. 713

-BRANCO
-WHITE

A B
150 75

REF. 714

-BRANCO
-WHITE

A B
225 75

REF. 715

-BRANCO
-WHITE

A B
225 150

REF. 735

-CASTANHO
-BROWN

A B
225 75

REF. 736

-CASTANHO
-BROWN

A B
225 150

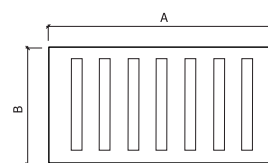


REF. 200

-DOURADO
-GOLDEN

A B
200 100
150 150
200 200
300 150

10



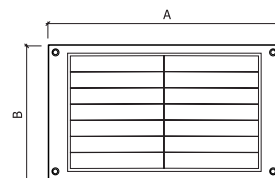
10

REGULÁVEL
ADJUSTABLE

10

10

10

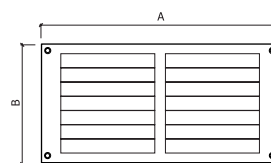


10

10

10

20



T E C H N I C

V E N T I L A D O R E S ■ V E N T S

€

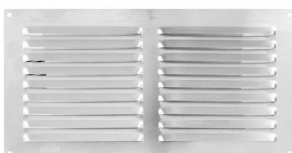
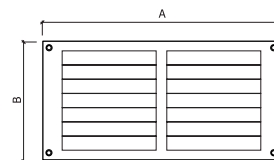


REF. 200

-PRATA
-SILVER

| A | B |
|-----|-----|
| 200 | 100 |
| 150 | 150 |
| 300 | 150 |
| 200 | 200 |

2 0

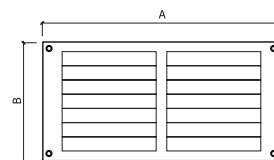


REF. 200

-LACADO BRANCO
-WHITE LACQUERED

| A | B |
|-----|-----|
| 200 | 100 |
| 150 | 150 |
| 300 | 150 |
| 200 | 200 |

2 0

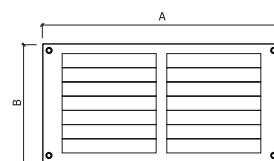


REF. 200

-REV. FAIA
-BEECH COATED

| A | B |
|-----|-----|
| 200 | 100 |
| 150 | 150 |
| 300 | 150 |
| 200 | 200 |

2 0

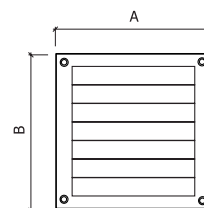


REF. 200

-REV. WENGUÉ
-WENGE COATED

| A | B |
|-----|-----|
| 200 | 100 |
| 150 | 150 |
| 300 | 150 |
| 200 | 200 |

2 0



T E C H N I C

V E N T I L A D O R E S ■ V E N T S



REF. 788

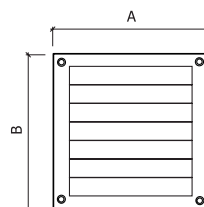
-PRATA/LACADO BRANCO
-SILVER/WHITE LACQUERED

| A | B |
|-----|-----|
| 250 | 150 |

€



10



C/ REDE MOSQUITEIRA
W/INSECTS PROTECTION NET

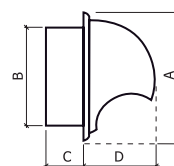


REF. 218

-INOX
-STAINLESS STEEL

| A | B | C | D | Ø Tub |
|-----|-----|----|----|---------|
| 149 | 89 | 40 | 74 | 90-110 |
| 183 | 109 | 50 | 95 | 110-130 |

1



REF. 219

-ABS BRANCO
-WHITE ABS

| A | B | C | D | Ø Tub |
|-----|-----|----|----|---------|
| 149 | 98 | 51 | 74 | 97-111 |
| 181 | 107 | 55 | 95 | 120-138 |

1

REF. 220

-AÇO LACADO
-STEEL WHITE PAINTED

| A | B | C | Ø Tub |
|-----|----|----|--------|
| 139 | 90 | 45 | 97-111 |

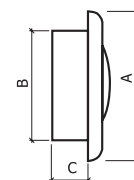
1

REF. 221

-ALUMÍNIO LACADO BRANCO
-WHITE LACQUERED ALUMINUM

| A | B | C | Ø Tub |
|-----|-----|----|---------|
| 164 | 110 | 45 | 111-130 |

1





REF. 60G

-LATÃO BRASS

| A | B | C | D |
|----|----|----|----|
| 15 | 21 | 19 | 9 |
| 20 | 23 | 19 | 10 |
| 25 | 25 | 20 | 10 |
| 30 | 28 | 22 | 13 |
| 40 | 33 | 30 | 14 |
| 50 | 38 | 38 | 16 |
| 60 | 41 | 47 | 17 |
| 70 | 48 | 52 | 20 |

-C/ CHAVES IGUAIS

-W/ KEYED ALIKE

| A | B | C | D |
|----|----|----|----|
| 30 | 28 | 22 | 13 |
| 40 | 33 | 30 | 14 |
| 50 | 38 | 38 | 16 |



REF. 90G

-LATÃO

-BRASS

| A | B | C | D |
|----|----|----|----|
| 50 | 42 | 36 | 18 |
| 60 | 48 | 40 | 20 |



REF. 160G

-LATÃO

-BRASS

| A | B | C | D |
|----|----|----|----|
| 20 | 30 | 24 | 10 |
| 30 | 40 | 32 | 12 |
| 40 | 50 | 37 | 13 |

REF. MOD.8

-LATÃO

-BRASS

| A | B | C | D |
|----|----|----|----|
| 60 | 45 | 18 | 15 |
| 75 | 48 | 24 | 18 |
| 90 | 60 | 36 | 18 |

-C/ CHAVES IGUAIS

-W/ KEYED ALIKE

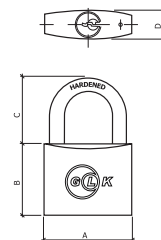
| A | B | C | D |
|----|----|----|----|
| 60 | 45 | 18 | 15 |
| 75 | 48 | 24 | 18 |
| 90 | 60 | 36 | 18 |



€

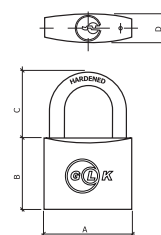


12



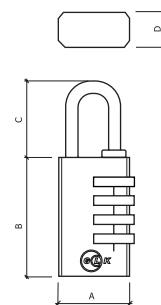
3 CHAVES
3 KEYS

6

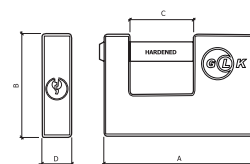


5 CHAVES DE PONTOS
5 KEYS POINTS

6



6



3 CHAVES
3 KEYS

€

€

€

T E C H N I C

MASTER
ALARM

MASTER
ALARM

€



REF. 6796

SIRENE C/ 120dB
120 dB ALARM
2,4m

1



REF. 2770

SIRENE C/ 100dB
100 dB ALARM
85mm

1



REF. 6798

SIRENE C/ 110dB
110 dB ALARM
10m

1



REF. 1411

SIRENE C/ 100dB
100 dB ALARM
0,7m

1

TECHNIC

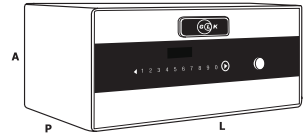
COFRES ■ SAFE BOXES



REF. GL2045

PAINEL DIGITAL
DIGITAL PANEL
SISTEMA DE ABERTURA
DE GAVETA
DRAWER OPENING SYSTEM

| A | L | P |
|-----|-----|-----|
| 200 | 450 | 400 |



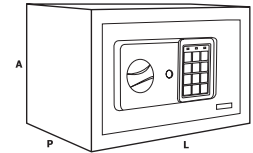
1



REF. GL200

-PRETO BLACK

| A | L | P |
|-----|-----|-----|
| 200 | 300 | 200 |



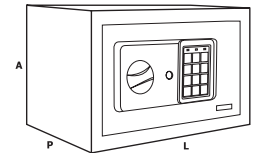
1



REF. GL250

-PRETO BLACK

| A | L | P |
|-----|-----|-----|
| 250 | 350 | 250 |



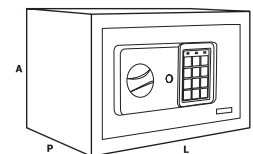
1



REF. GL250M

-MADEIRA WOOD

| A | L | P |
|-----|-----|-----|
| 250 | 350 | 250 |



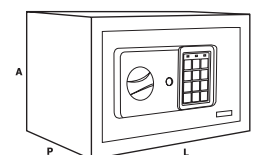
1



REF. GL300

-PRETO BLACK

| A | L | P |
|-----|-----|-----|
| 300 | 380 | 300 |



1



REF. 31010

- ANTRACITE
- DARK GREY

| A | L | P |
|-----|-----|-----|
| 250 | 350 | 250 |

REF. 31020

- ANTRACITE
- DARK GREY

| A | L | P |
|-----|-----|-----|
| 380 | 350 | 360 |

REF. 31040

- ANTRACITE
- DARK GREY

| A | L | P |
|-----|-----|-----|
| 520 | 350 | 360 |



REF. CO

COFRE MONOBLOCO
MONOBLOC SAFE

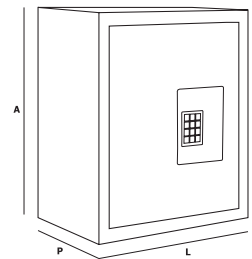
- CREME/CINZA
- BEIGE/GREY

| | A | L | P |
|--------------|-----|----|----|
| 306Kg | 90 | 60 | 50 |
| 350Kg | 100 | 60 | 50 |
| 400Kg | 110 | 60 | 50 |
| 450Kg | 120 | 60 | 50 |
| 630Kg | 150 | 60 | 50 |
| 850Kg | 170 | 60 | 50 |

€



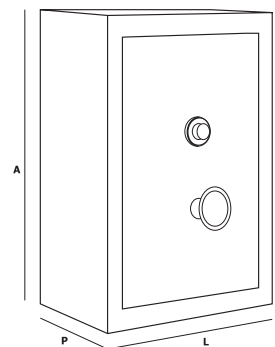
1



1

1

1



T E C H N I C

C O F R E S ■ S A F E B O X E S



REF. C9726

-GRAFITE GRAPHITE

| | A | L | P |
|----|----|-----|-----|
| T2 | 90 | 200 | 160 |

REF. C9736

-GRAFITE GRAPHITE

| | A | L | P |
|----|----|-----|-----|
| T3 | 66 | 250 | 180 |

REF. C9746

-GRAFITE GRAPHITE

| | A | L | P |
|----|----|-----|-----|
| T4 | 90 | 300 | 240 |



REF. C9114/15/16

-VERMELHO/AZUL/GRAFITE

-RED/BLUE/GRAPHITE

| | A | L | P |
|----|----|-----|-----|
| T1 | 80 | 152 | 118 |

REF. C9124/25/26

-VERMELHO/AZUL/GRAFITE

-RED/BLUE/GRAPHITE

| | A | L | P |
|----|----|-----|-----|
| T2 | 90 | 200 | 160 |

REF. C9134/35/36

-VERMELHO/AZUL/GRAFITE

-RED/BLUE/GRAPHITE

| | A | L | P |
|----|----|-----|-----|
| T3 | 90 | 250 | 180 |

REF. C9144/45/46

-VERMELHO/AZUL/GRAFITE

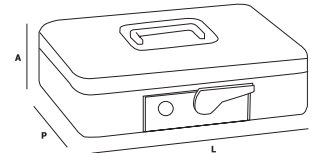
-RED/BLUE/GRAPHITE

| | A | L | P |
|----|----|-----|-----|
| T4 | 90 | 300 | 240 |

€



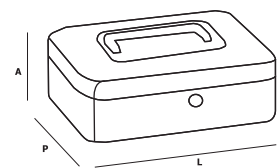
1



1

1

1



1

1

1

TECHNIC

CAIXAS DE
CORREIO

MAIL
BOXES



REF. V5001

-BRANCO
-WHITE

| A | L | P |
|-----|-----|-----|
| 405 | 300 | 150 |

REF. V5002

-PRATA
-SILVER

| A | L | P |
|-----|-----|-----|
| 405 | 300 | 150 |



REF. E5321

-BRANCO
-WHITE

| A | L | P |
|-----|-----|-----|
| 410 | 270 | 100 |

REF. E5323

-VERDE
-GREEN

| A | L | P |
|-----|-----|-----|
| 410 | 270 | 100 |



REF. E5611

-BRANCO
-WHITE

| A | L | P |
|-----|-----|-----|
| 360 | 370 | 100 |

REF. E5617

-INOX
-STAINLESS STEEL

| A | L | P |
|-----|-----|-----|
| 360 | 370 | 100 |



REF. E5701

-BRANCO
-WHITE

| A | L | P |
|-----|-----|----|
| 260 | 360 | 80 |

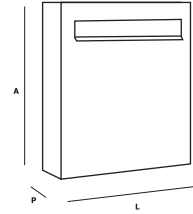
REF. E5707

-INOX
-STAINLESS STEEL

| A | L | P |
|-----|-----|----|
| 260 | 360 | 80 |

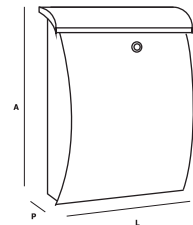


1



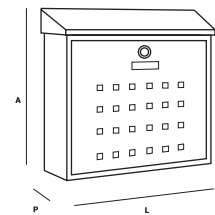
1

1



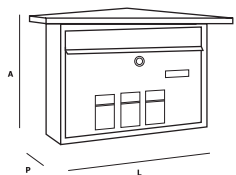
1

1



1

1



1

TECHNIC

CAIXAS DE
CORREIO

MAIL
BOXES



REF. E5711

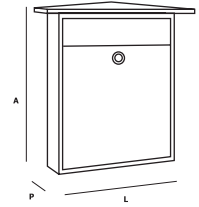
-BRANCO
-WHITE

| A | L | P |
|-----|-----|----|
| 310 | 100 | 85 |

€



1

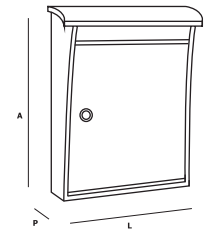


REF. E5907

-INOX
-STAINLESS STEEL

| A | L | P |
|-----|-----|-----|
| 375 | 330 | 105 |

1

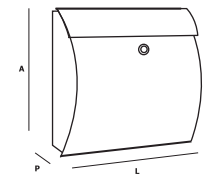


REF. E5405

-INOX
-STAINLESS STEEL

| A | L | P |
|-----|-----|-----|
| 375 | 330 | 105 |

1

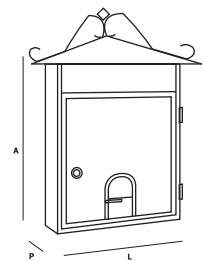


REF. E2630

-PRETO ENVELHECIDO
-WEATHERED BLACK

| A | L | P |
|-----|-----|-----|
| 430 | 350 | 120 |

1





REF. 80-AU
-AÇO TRATADO
-HARDENED STEEL

REF. 80-AV
-AÇO TRATADO
-HARDENED STEEL

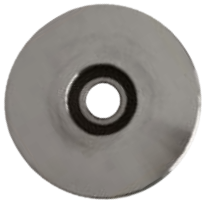
REF. 100-AU
-AÇO TRATADO
-HARDENED STEEL

REF. 100-AV
-AÇO TRATADO
-HARDENED STEEL



REF. 80-SV
-AÇO TRATADO
-HARDENED STEEL

REF. 100-SV
-AÇO TRATADO
-HARDENED STEEL



REF. 60V/U
-AÇO TRATADO
-HARDENED STEEL

A
60

REF. 80V/U
-AÇO TRATADO
-HARDENED STEEL

A
80

REF. 100V/U
-AÇO TRATADO
-HARDENED STEEL

A
100

REF. 120V/U
-AÇO TRATADO
-HARDENED STEEL

A
120



REF. R25
-NYLON/NYLON

A
25

REF. R30
-NYLON/NYLON

A
30

REF. R40
-NYLON/NYLON

A
40

€



6

6

6

6

6

6

2 4

2 4

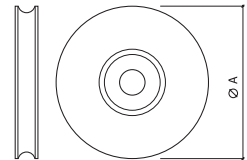
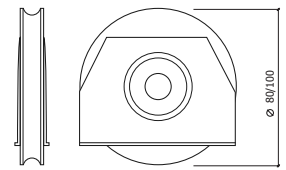
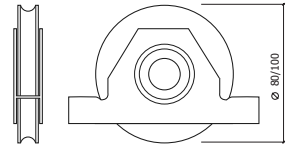
8

8

5 0

5 0

2 5



T E C H N I C

S E R R A L H A R I A

LOCKSMITHS
ACCESSORIES

€



REF. 5163

A **B**
5/16" 3"

12

REF. 5164

A **B**
5/16" 3 1/2"

12

REF. 5165

A **B**
5/16" 2P

12

REF. 51634

A **B**
5/16" 3/4P

12

REF. 5166

A **B**
5/16" 1P

12

REF. 5167

A **B**
5/16" 1,5P

12

REF. 3834

A **B**
3/8" 3/4P

12

REF. 3810

A **B**
3/8" 1P

12

REF. 3815

A **B**
3/8" 1,5P

12

REF. 4834

A **B**
4/8" 3/4P

12

REF. 4810

A **B**
4/8" 1P

12

REF. 4815

A **B**
4/8" 1,5P

12

REF. 4820

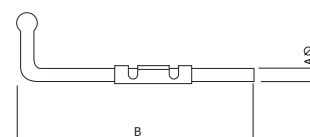
A **B**
4/8" 2P

12

REF. 4825

A **B**
4/8" 2,5P

12



TECHNIC

SERRALHARIA

LOCKSMITHS
ACCESSORIES



REF. 4810

A B
4/8" 1P

REF. 4815

A B
4/8" 1,5P

REF. 4820

A B
4/8" 2P

REF. 4825

A B
4/8" 2,5P



REF. 104

A
1/4"

REF. 516

A
5/16"

REF. 308

A
3/8"

REF. 408

A
4/8"

REF. 508

A
5/8"

€



12

12

12

12

25

25

25

25

25

